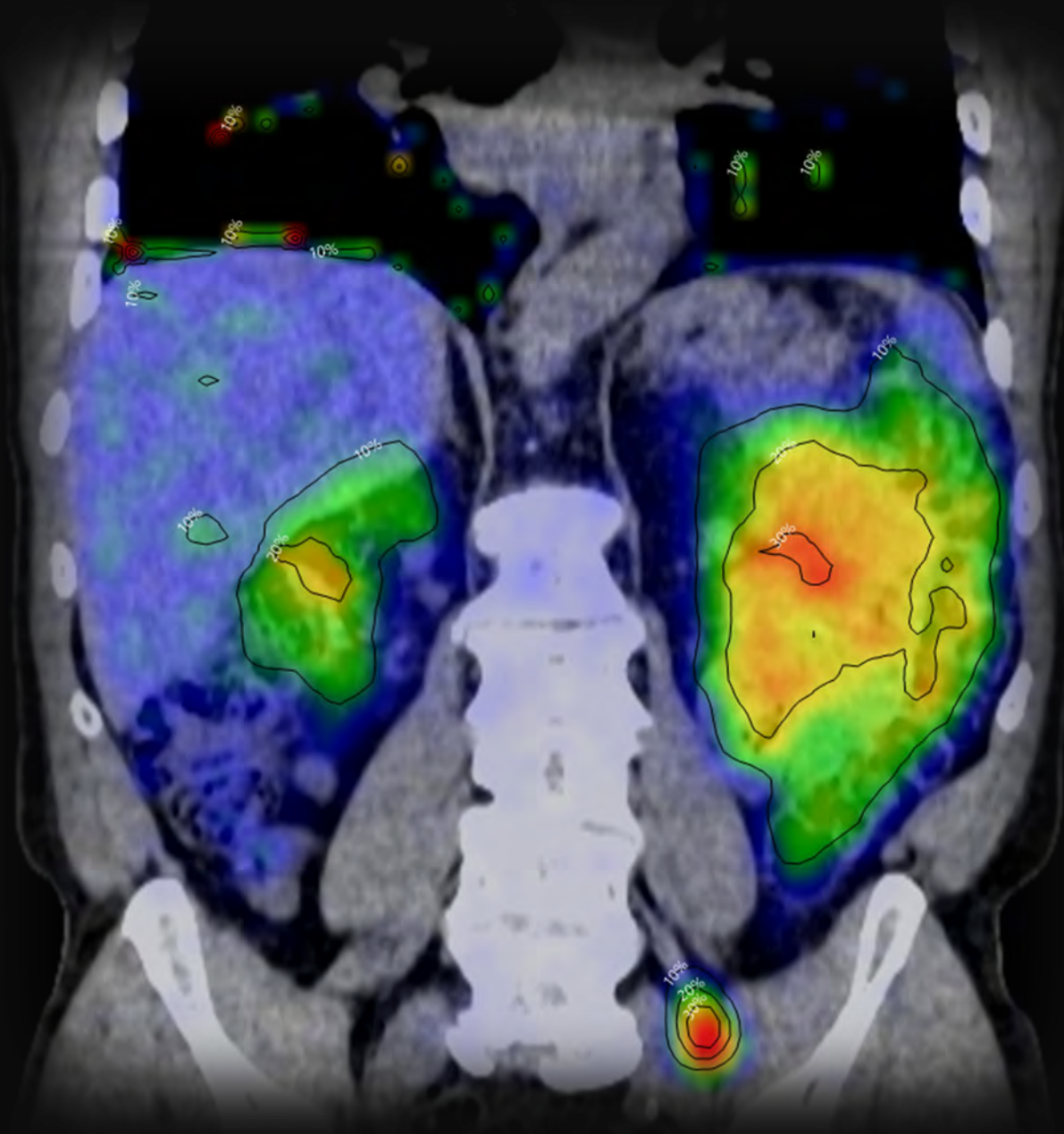




TURN ON COMMENTS IN PDF FOR STORYLINE
TOOLS > COMMENTS > OPEN



VOXIMETRY™

Fighting Cancer.
Making it Personal.

Sue Wallace, PhD CEO
swallace@voximetry.com

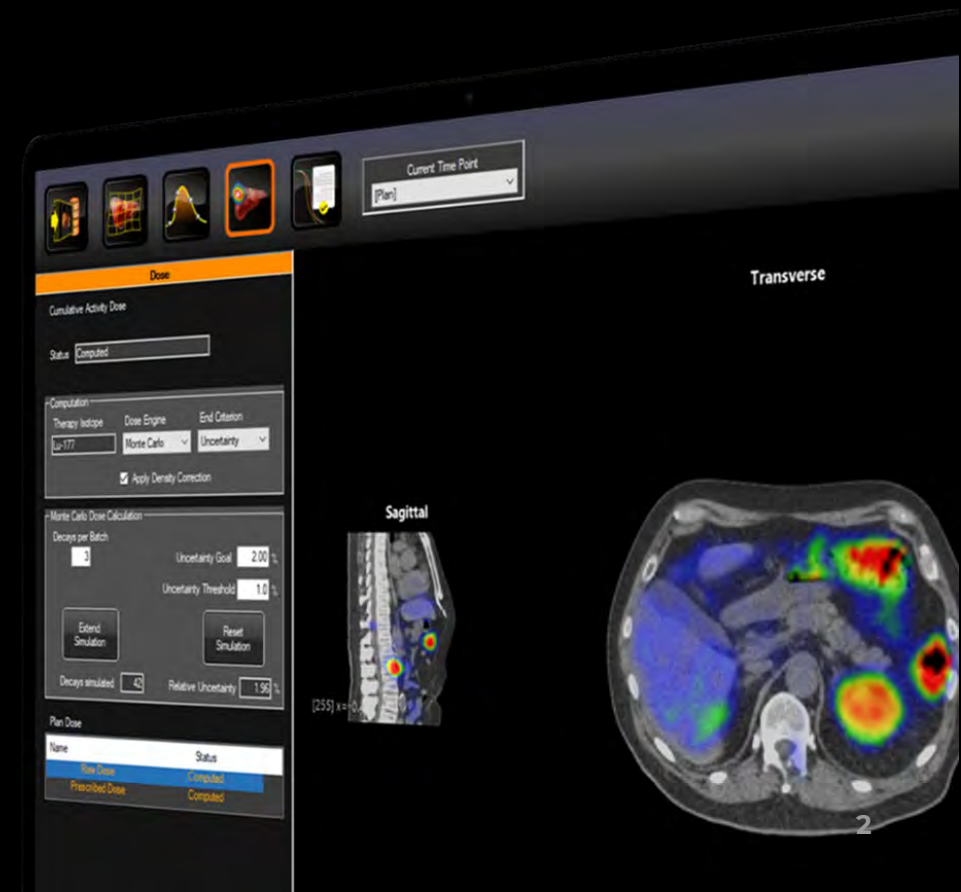




Going Nuclear to Fight Cancer

AI-driven software & services, powered by high-speed NVIDIA GPUs

- ▶ Positioned at the forefront of targeted **theranostics**, our Torch[®] technology is the **accuracy leader** in clinical trial data analysis and personalizing clinical treatment plans.
- ▶ Torch software **streamlines drug development** with reduced time and cost of theranostic drug development.
- ▶ Torch supports clinical care **with tailored, effective treatments and enhanced outcomes**.
- ▶ Currently in the **commercial phase**, we partner with Siemens Molecular Imaging and Flywheel.io, enhancing our global reach, clinical impact, and data transfer security.
- ▶ With an FDA-approved product and CE mark by mid-2025, Voximetry is **poised for rapid expansion**.





- A BETTER APPROACH TO PERSONALIZED DOSIMETRY
MDS HAVE NO PATIENT-SPECIFIC INFORMATION

Theranostics Achilles Heel



Patient A



Patient B



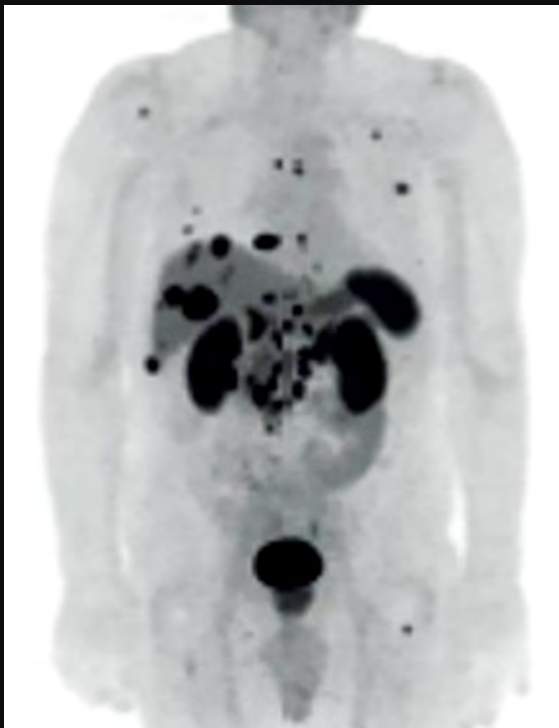
Patient C



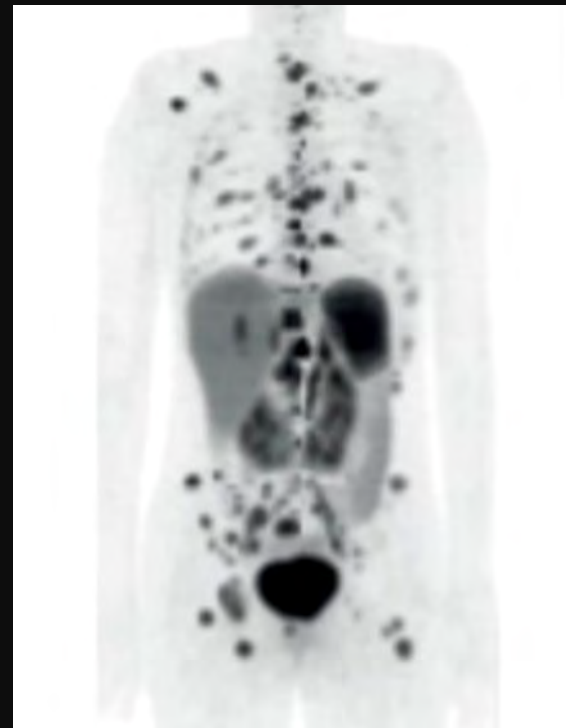
Patient D

- A BETTER APPROACH TO PERSONALIZED DOSIMETRY
MDs have **NO PATIENT-SPECIFIC INFORMATION**

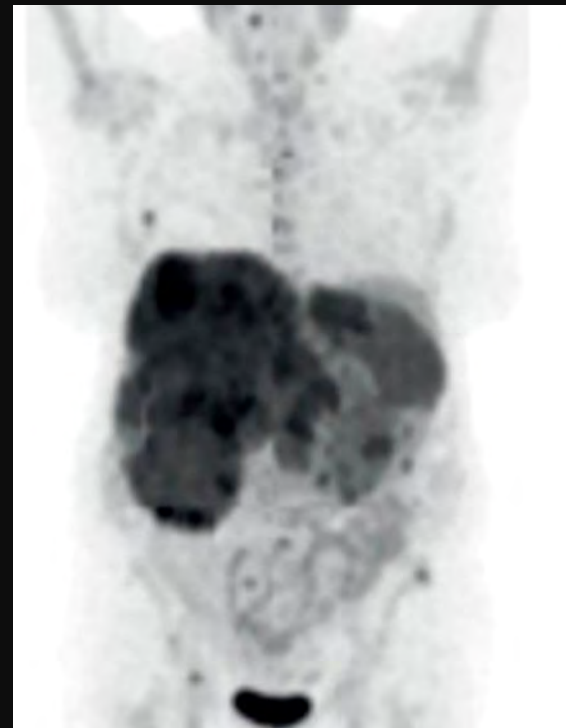
Reality is Patients Vary 10-Fold



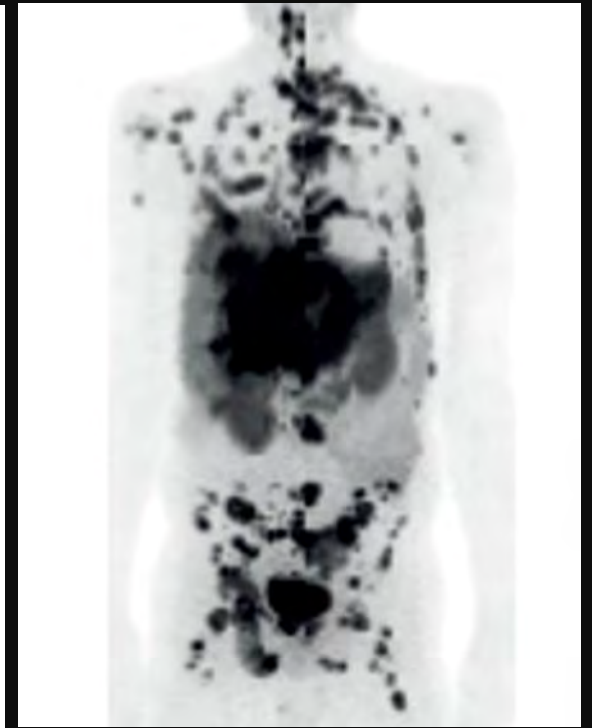
Patient A



Patient B



Patient C



Patient D

We Built a Team to Fix That.

Deep Domain Expertise

AI ∞ Monte Carlo ∞ GPU

Image Reconstruction ∞ Auto-Segmentation
Pharmacokinetics ∞ Radiation Transport





A BETTER APPROACH TO PERSONALIZED DOSIMETRY

Torch® is the Accuracy Leader

- ▶ The only full Monte Carlo absorbed dose calculation
- ▶ The only solution with density correction
- ▶ Lightning-fast “real time” Monte Carlo
- ▶ Easy 5-step workflow





PERSONALIZED CARE

Why RPT Dosimetry Matters

71%

Increased Tumor Response

16

Months Improved Survival

SEE ONE MORE GRADUATION

MEET ONE MORE GRANDCHILD

ENJOY ONE MORE HOLIDAY

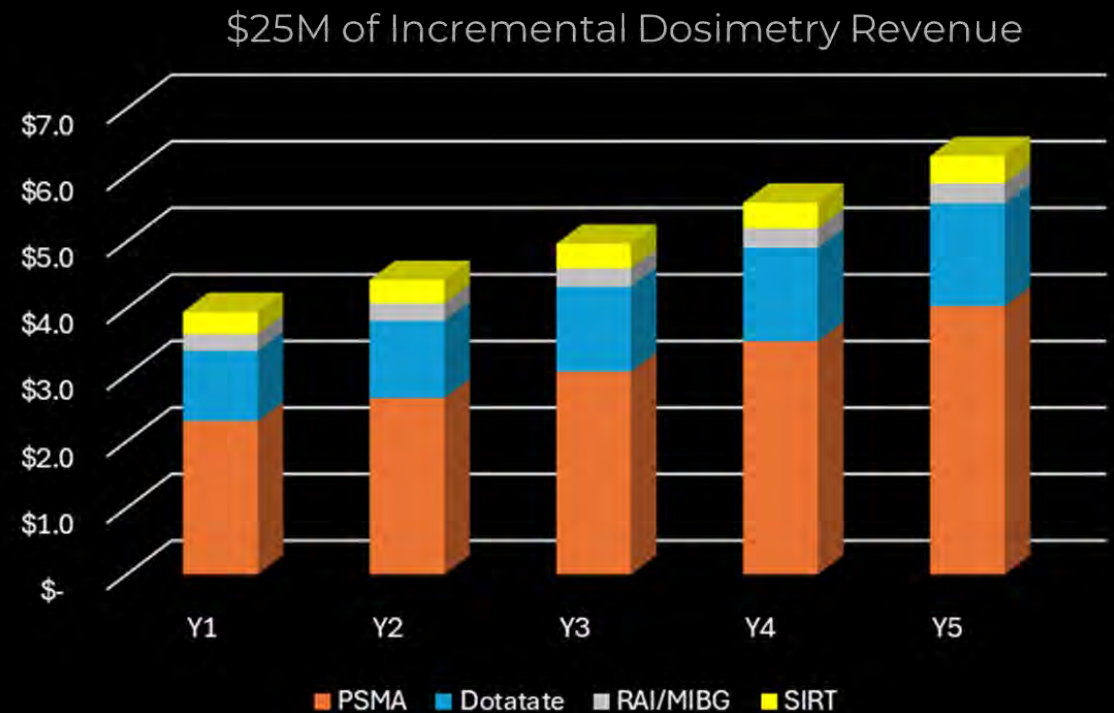




GOOD MEDICINE IS GOOD FOR THE CLINIC

\$Ms of Incremental Annual Revenue for the Clinic

- ▶ Existing Reimbursement Codes (US)
- ▶ Mandated by Law in the EU





EARLY COMMERCIAL PHASE: SOFTWARE & REMOTE SERVICES

3-Year Company Outlook

- ▶ Cash Positive 1H 2025
- ▶ Monthly Burn Rate
- ▶ \$494K 1H 2024 (Act)
- ▶ \$540K 2H 2024 (Plan)
- ▶ Services provided to support Pharma development

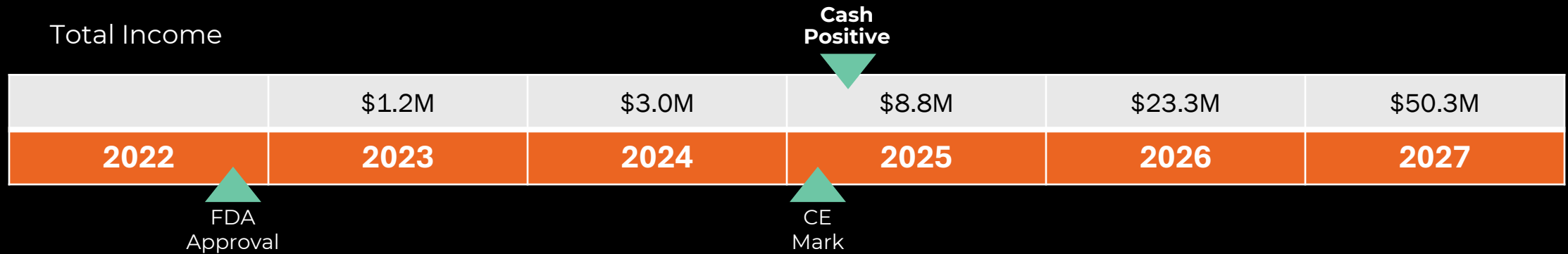
Revenue Outlook vs Spend





SEEKING \$8M SERIES A

Funding Roadmap



\$3M Non-Dilutive
NIH Grant Funding

\$6M Non-Dilutive
NIH Grant Funding

SAFEs
\$1.5M

Seed (SAFE + New Money)
\$5M @ Pre-money value = \$18M

SEEKING SERIES-A
\$8M @ Pre-money = \$40M



**VOXIMETRY™**

Making it Personal.

Sue Wallace, PhD
swallace@voximetry.com
www.Voximetry.com
262-751-6441