



US007804299B2

(12) **United States Patent**
Reeder et al.

(10) **Patent No.:** **US 7,804,299 B2**
(45) **Date of Patent:** **Sep. 28, 2010**

(54) **DIFFUSION WEIGHTED PREPARATORY SEQUENCE FOR MAGNETIC RESONANCE IMAGING PULSE SEQUENCE**

2004/0071324 A1 4/2004 Norris et al.
2007/0249929 A1* 10/2007 Jeong et al. 600/410
2008/0319301 A1* 12/2008 Busse 600/410

(75) Inventors: **Scott B. Reeder**, Middleton, WI (US);
Reed Busse, Madison, WI (US); **Jean H. Brittain**, Middleton, WI (US)

OTHER PUBLICATIONS

J. Coremans et al, A Comparison Between Different Imaging Strategies for Diffusion Measurements with the Centric Phase-Encoded TurboFLASH Sequence, Journal Of Magnetic Resonance 124, 323-342 (1997).

(73) Assignee: **Wisconsin Alumni Research Foundation**, Madison, WI (US)

F. Klammler et al, Volume-selective and spectroscopically resolved NMR investigation of diffusion and relaxation in fertilised hen eggs, Phys. Med. Biol., 1990 vol. 35, No. 1, 67-79.

(*) Notice: Subject to any disclaimer, the term of this patent is extended or adjusted under 35 U.S.C. 154(b) by 468 days.

M. Deimling et al, Diffusion Weighted Imaging With Turbo-FLASH, Book of Abstracts, vol. 1, Society of Magnetic Resonance in Medicine, Ninth Annual Scientific Meeting and Exhibition, Aug. 18-24, 1990, NY, NY.

(21) Appl. No.: **11/800,374**

David A. Feinberg et al, Perfusion Imaging by 3D FT Echo Planar Utilizing Separate Pulse Sequences for Low Velocity and Diffusion Encoding; Book of Abstracts, vol. 1, Society of Magnetic Resonance in Medicine, Eighth Annual Scientific Meeting and Exhibition, Aug. 12-18, 1989, Amsterdam, The Netherlands.

(22) Filed: **May 4, 2007**

William H. Perman et al, DPSF: Snapshot Flash Diffusion/Perfusion Imaging, Book of Abstracts, vol. 1, Society of Magnetic Resonance in Medicine, Ninth Annual Scientific Meeting and Exhibition, Aug. 18-24, 1990, NY, NY.

(65) **Prior Publication Data**

US 2008/0275329 A1 Nov. 6, 2008

(51) **Int. Cl.**
G01V 3/00 (2006.01)

(Continued)

(52) **U.S. Cl.** **324/309**

(58) **Field of Classification Search** 324/300-322;
600/407-435

Primary Examiner—Brij B Shrivastav
(74) *Attorney, Agent, or Firm*—Quarles & Brady LLP

See application file for complete search history.

(56) **References Cited**

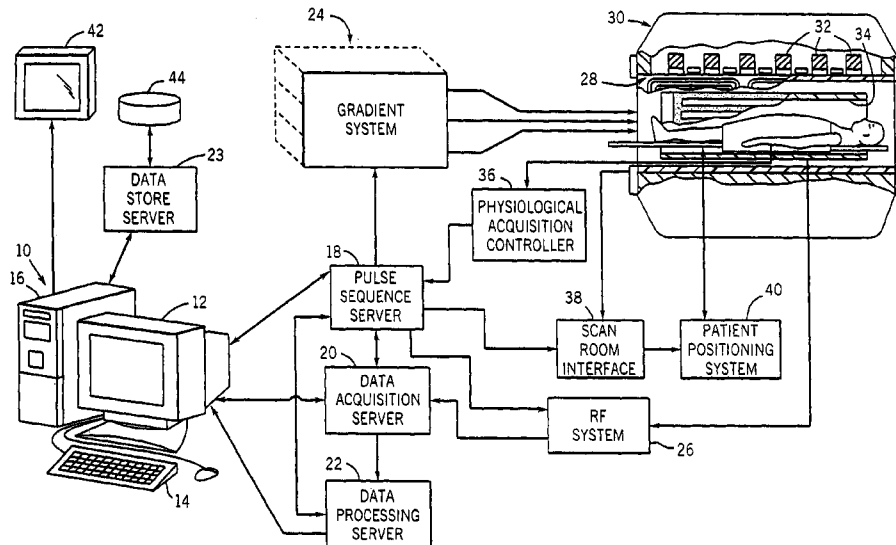
(57) **ABSTRACT**

U.S. PATENT DOCUMENTS

6,078,176 A * 6/2000 McKinnon 324/309
6,246,238 B1 * 6/2001 Hennig 324/307
6,794,866 B2 * 9/2004 Ferrage et al. 324/307
6,842,000 B2 * 1/2005 Norris et al. 324/309
7,474,097 B2 * 1/2009 Bydder et al. 324/307
7,511,494 B2 * 3/2009 Wedeen 324/309
7,633,291 B2 * 12/2009 Zwanger 324/309

A preparatory pulse sequence is applied prior to an imaging pulse sequence during a diffusion-weighted MRI scan. The preparatory pulse sequence diffusion weights the longitudinal magnetization using a gradient waveform that is first moment nulled to reduce image artifacts caused by patient motion.

3 Claims, 5 Drawing Sheets



OTHER PUBLICATIONS

PCT/US2008057228 International Search Report and Written Opinion; 13 pages.

D G Norris: Implications of Bulk Motion for Diffusion-Weighted Imaging Experiments: Effects, Mechanisms and Solutions, *Journ. of Mag. Resonance Imaging*, vol. 13, 2001, pp. 486-495.

Yongbi M N et al: A Modified Sub-Second Fast-Steep Sequence Incorporation Bipolar Gradients for In vivo Diffusion Imaging; *Magnetic Resonance in Medicine*, Academic Press, Duluth MN, vol. 35, No. 6, Jun. 1, 1996, pp. 911-916.

T G Reese et al: Reduction of Eddy-Current-Induced Distortion in Diffusion MRI Using A Twice-Refocused Spin Echo, *Magnetic Resonance in Medicine*, vol. 49, 2003, pp. 117-182.

R Nana et al: Ex Vivo Diffusion Anisotropy Measurement for the Evaluation of Gastric Tissue Fiber Directions Using 3D Turbo STEAM Sequence; *Proc. Intl. Soc. Mag. Reson. Med.* 14, 2006, p. 2227.

Feinberg D A et al: Tissue Perfusion In Humans Studied By Fourier Velocity Distribution, Line Scan and Echo-Planar Imaging; *Magnetic Resonance In Medicine*, Academic Press, Duluth MN, vol. 16, No. 2; Nov. 1, 1990.

* cited by examiner

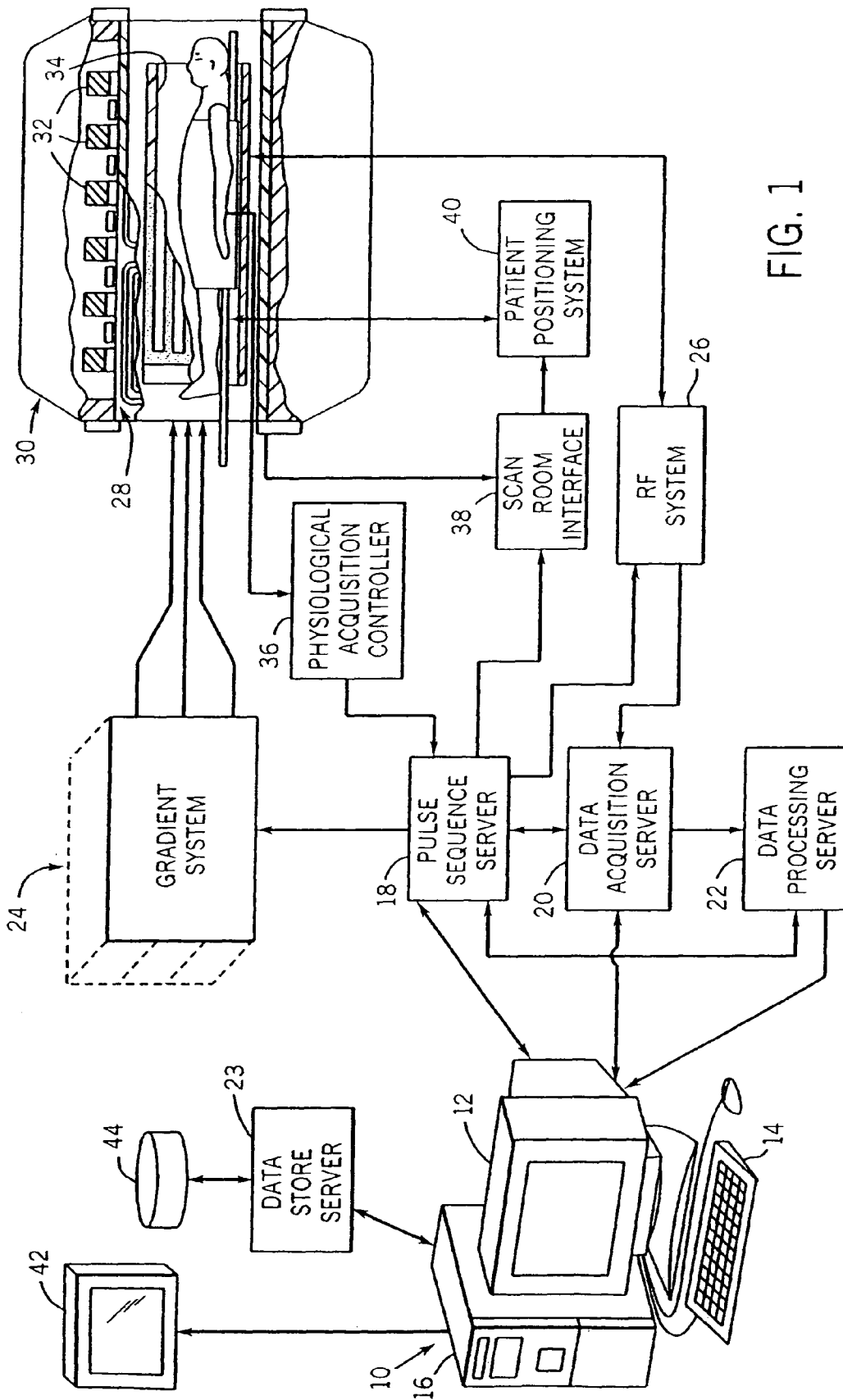


FIG. 1

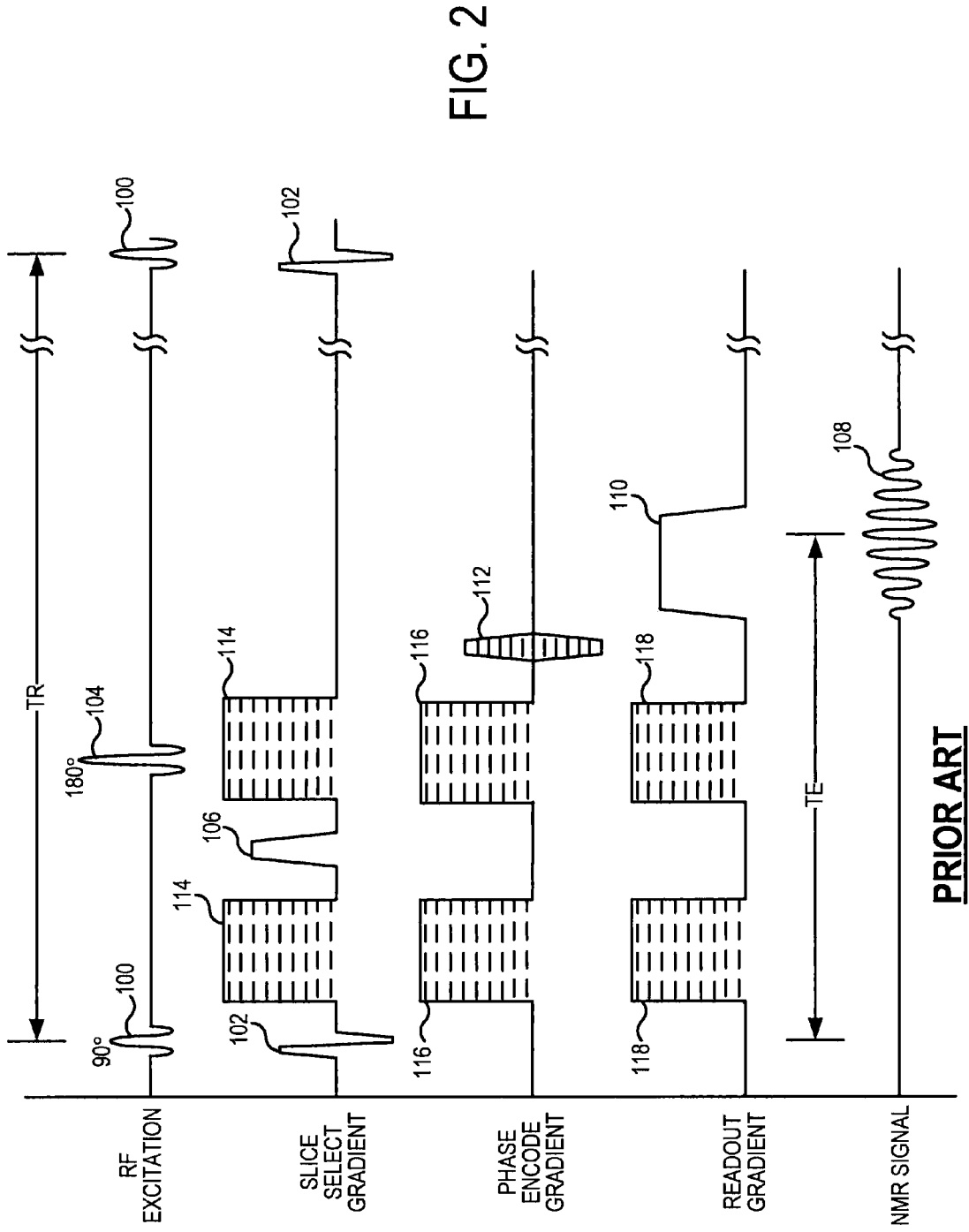


FIG. 2

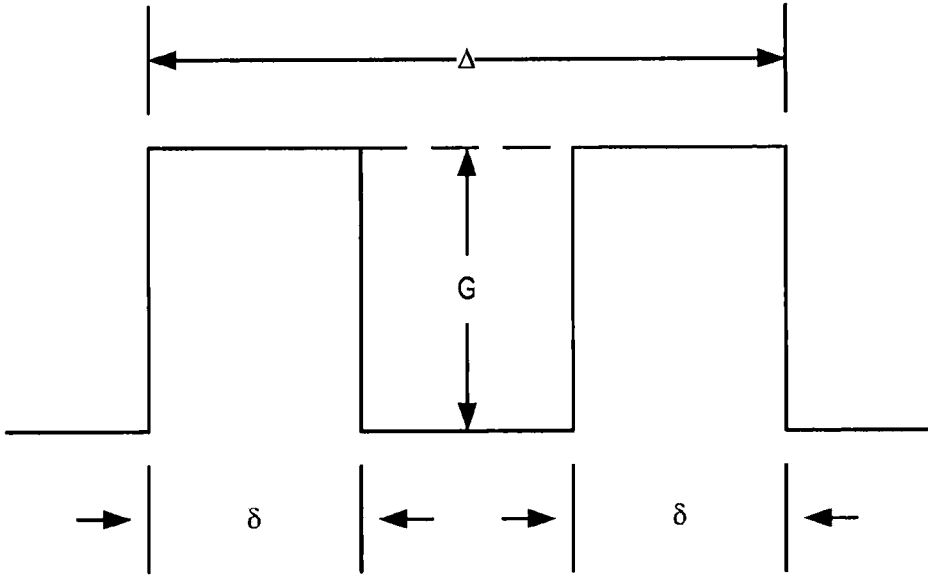


FIG. 3
PRIOR ART

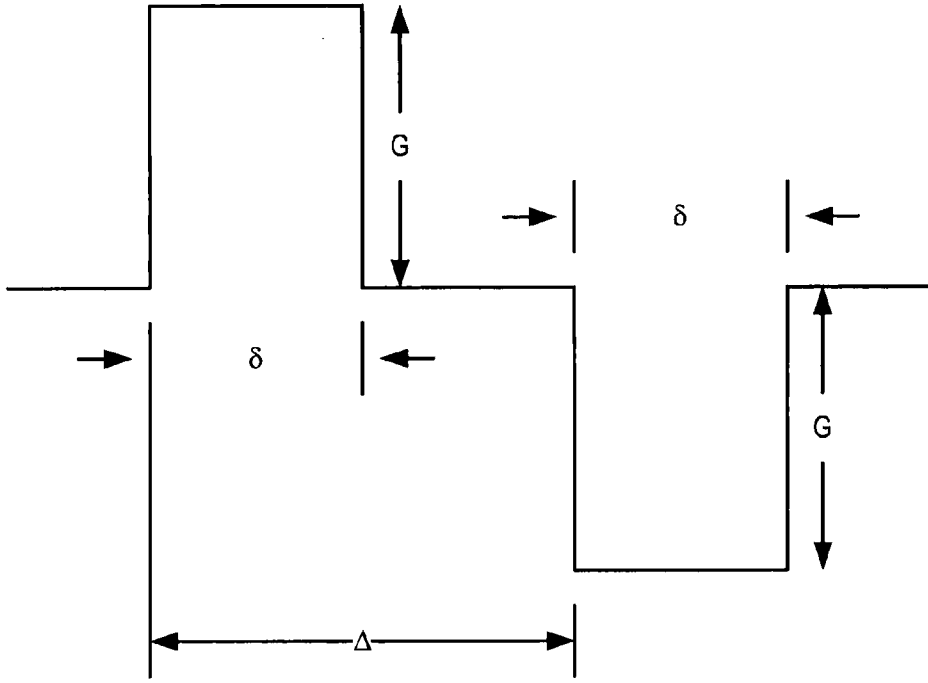


FIG. 4
PRIOR ART

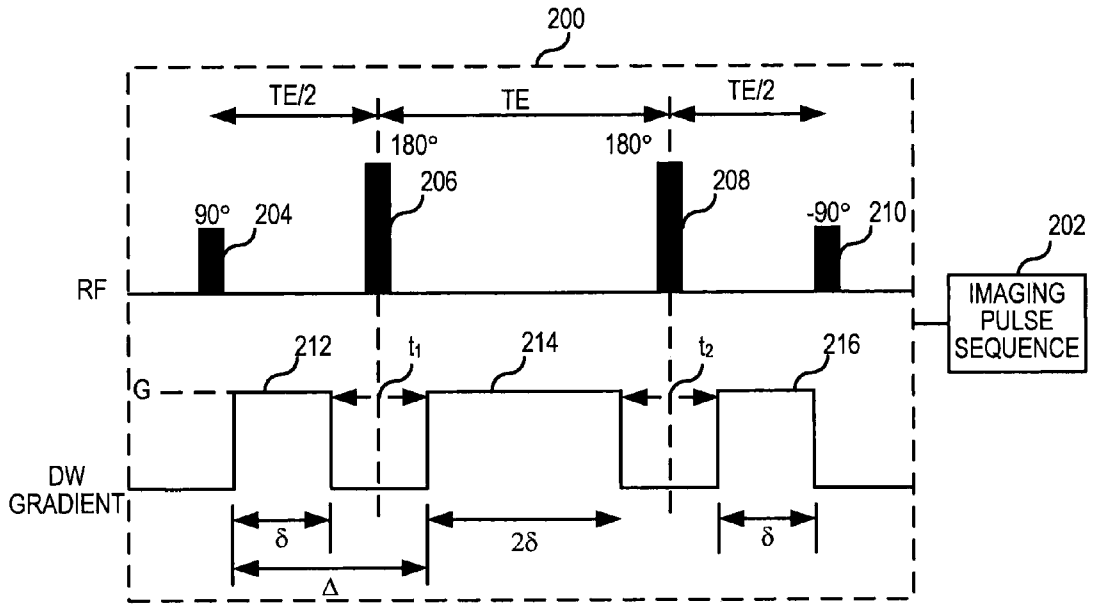


FIG. 5

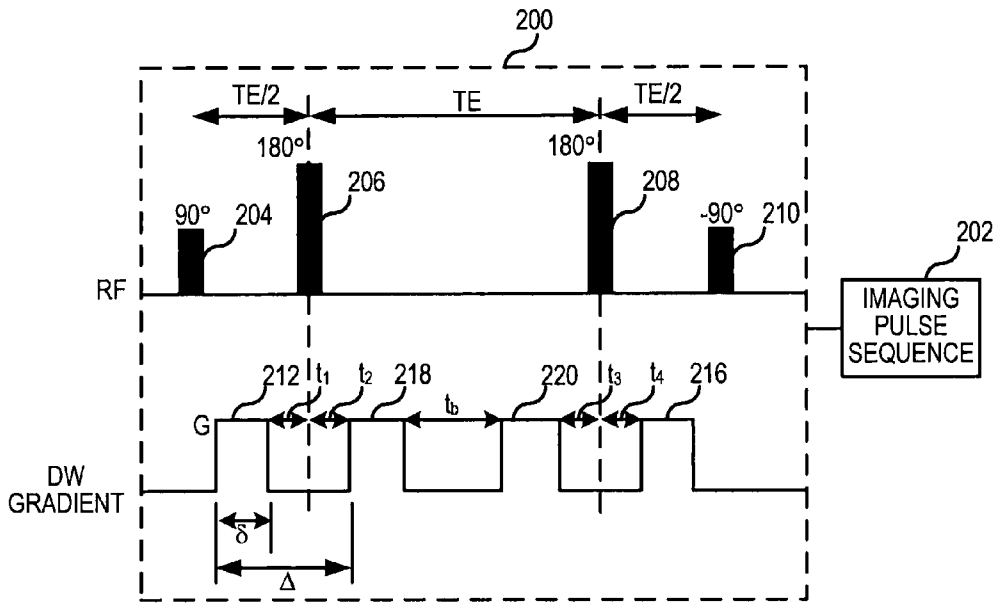


FIG. 6

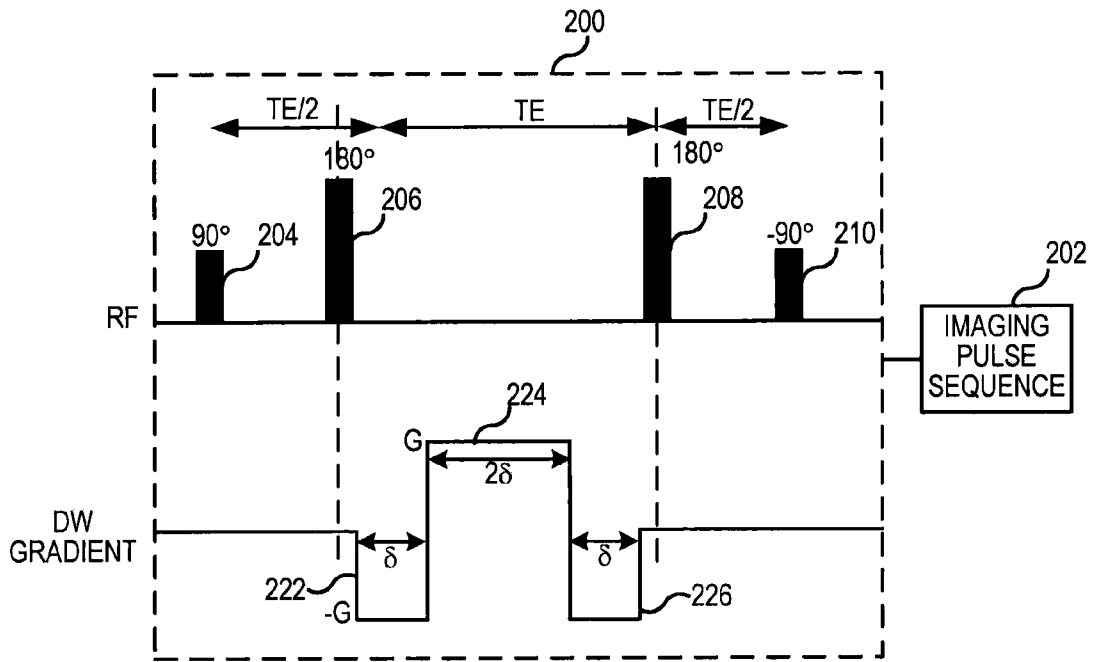


FIG. 7

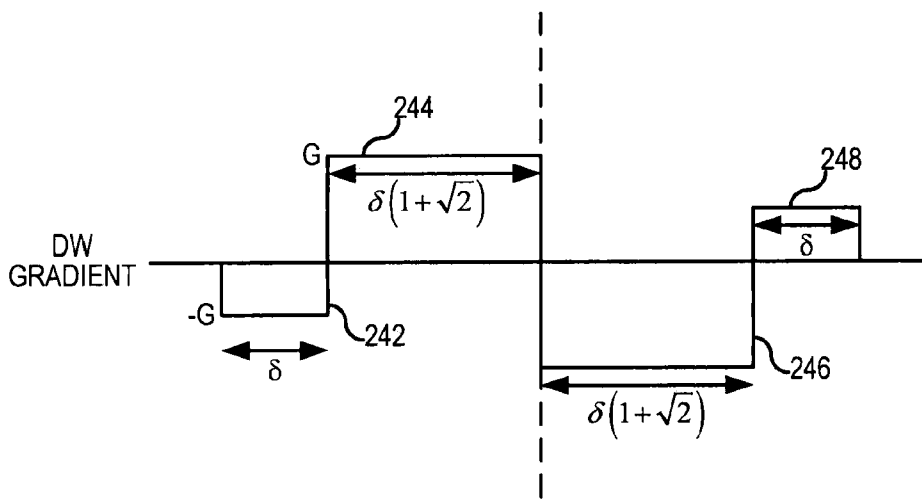


FIG. 8

1

DIFFUSION WEIGHTED PREPARATORY SEQUENCE FOR MAGNETIC RESONANCE IMAGING PULSE SEQUENCE

BACKGROUND OF THE INVENTION

The field of the invention is nuclear magnetic resonance imaging (MRI) methods and systems. More particularly, the invention relates to MRI diffusion weighted imaging (DWI).

Any nucleus which possesses a magnetic moment attempts to align itself with the direction of the magnetic field in which it is located. In doing so, however, the nucleus precesses around this direction at a characteristic angular frequency (Larmor frequency) which is dependent on the strength of the magnetic field and on the properties of the specific nuclear species (the gyromagnetic constant γ (of the nucleus). Nuclei which exhibit this phenomena are referred to herein as "spins".

When a substance such as human tissue is subjected to a uniform magnetic field (polarizing field B_0), the individual magnetic moments of the spins in the tissue attempt to align with this polarizing field, but precess about it in random order at their characteristic Larmor frequency. A net longitudinal magnetization M_0 is produced in the direction of the polarizing field, but the randomly oriented magnetic components in the perpendicular, or transverse, plane (x-y plane) cancel one another. If, however, the substance, or tissue, is subjected to a magnetic field (excitation field B_1) which is in the x-y plane and which is near the Larmor frequency, the net longitudinal magnetization, M_0 , may be rotated, or "tipped" into the x-y plane to produce a net transverse magnetic moment M_p , which is rotating, or spinning, in the x-y plane at the Larmor frequency. The practical value of this phenomenon resides in the signal which is emitted by the excited spins after the excitation signal B_1 is terminated. There are a wide variety of measurement sequences in which this nuclear magnetic resonance ("NMR") phenomena is exploited.

When utilizing NMR to produce images, a technique is employed to obtain NMR signals from specific locations in the subject. Typically, the region which is to be imaged (region of interest) is scanned by a sequence of NMR measurement cycles which vary according to the particular localization method being used. The resulting set of received NMR signals are digitized and processed to reconstruct the "MR" image using one of many well known reconstruction techniques. To perform such a scan, it is, of course, necessary to elicit NMR signals from specific locations in the subject. This is accomplished by employing magnetic fields (G_x , G_y , and G_z) which have the same direction as the polarizing field B_0 , but which have a gradient along the respective x, y and z axes. By controlling the strength of these gradients during each NMR cycle, the spatial distribution of spin excitation can be controlled and the location of the resulting NMR signals can be identified. MR imaging is employed to image a number of anatomical and physiological features of living animals.

Diffusion-weighted imaging (DWI) is a powerful MRI technique for probing microscopic tissue structure. In DWI, a pulse sequence is employed which contains a magnetic field gradient known as a diffusion gradient that sensitizes the MR signal to spin motion. A DWI pulse sequence is shown in FIG. 2. It includes the generation of a 90° selective RF excitation pulse **100** which is produced in the presence of a slice select gradient pulse **102** to excite spins in a 2D slice. A 180° RF refocusing pulse **104** is produced in the presence of a slice select gradient pulse **106** to refocus the transverse magnetization and an NMR signal **108** is acquired at that time in the presence of a readout gradient pulse **110**. The pulse sequence

2

is repeated and a phase encoding gradient pulse **112** produced just prior to signal readout is stepped through different values to sample k-space in the conventional manner.

Diffusion weighting of the acquired NMR signal **108** is provided by diffusion gradients **114**, **116** and **118** applied along the respective slice select, phase encode and readout gradient axes. Each diffusion weighted gradient **114**, **116** and **118** includes a first gradient lobe produced prior to the 180° RF pulse **104**, and a second gradient lobe produced after the 180° RF pulse **104**. The first and second diffusion gradient lobes are of equal size (area), but their relative values are changed to measure diffusion in different directions. In this spin echo sequence the two lobes of the diffusion gradient waveform are produced before and after the 180° RF pulse **104** and they have the same polarity. If the diffusion gradient is employed in a pulse sequence that does to have a 180° RF pulse, its waveform takes the form shown in FIG. 4. In this alternative embodiment the waveform is the same as that described above except the two lobes have opposite polarity.

In a DWI pulse sequence the detected MR signal intensity decreases with the speed of water diffusion in a given volume of tissue. The first moment of the diffusion gradient, also known as the "b-value" determines the speed of diffusion to which the image is sensitive. This b-value may be adjusted by either varying the area of the two lobes of the diffusion magnetic field gradient, or by varying the time interval between them. Referring to FIGS. 3 and 4, when water motion in the subject is unrestricted, the MR signal intensity at the center of the echo using a spin-echo diffusion-weighted pulse sequence is related to the b-value as follows:

$$A = \frac{S(b)}{S_0} = e^{-bD} \quad (1)$$

where the "b-value" $b = \gamma^2 G^2 \delta^2 (\Delta - \delta/3)$. The parameter γ is the gyromagnetic ratio and G is the amplitude of the applied diffusion magnetic field gradients. $S(b)$ is the MR signal magnitude with diffusion weighting b , and S_0 is the MR signal magnitude with no diffusion weighting ($b=0$). The parameter D is the diffusion coefficient of water within itself (in mm^2/s), which directly reflects the fluid viscosity where there are no structural restrictions to diffusion of the water. As shown in FIGS. 3 and 4, Δ is the time interval between the onsets of the two diffusion gradient lobes and δ is the duration of each gradient lobe. The diffusion coefficient D in equation (1) may be calculated, since b is known and the attenuation A can be measured.

There are a large number of clinically scientifically important applications for DWI. These include early detection and characterization of cytotoxic edema caused by cerebral infarction, improved tumor characterization through detection of restricted diffusion within a cellular tumor, and cerebral "tractography" for fiber angle mapping of the cerebral white matter, as well as many others. Within the abdomen, low b-value DWI is commonly used for liver imaging, to null the signal from flowing blood to improve the conspicuity of liver lesions such as metastases or primary liver tumors.

Unfortunately, DWI is exquisitely sensitive to motion. Large phase shifts from small patient bulk translations are encoded by the large amplitude diffusion weighted gradients. These phase shifts are extremely problematic for most DWI imaging methods such as that described above and illustrated in FIG. 2, which are "multi-shot" methods, i.e., require multiple excitations and acquisitions in order to form a complete k-space matrix prior to Fourier transformation. The slightest

amount of motion leads to large phase misregistrations between data acquired in the different shots due to first and higher order moment phase shifts from velocity and acceleration during the time that the diffusion pulses are being played. Such phase shifts lead to devastating image artifacts in the form of severe ghosting and blurring. For this reason, most DWI methods rely on echo planar imaging (EPI) which is a high SNR, ultra-rapid method that can acquire all lines of k-space in a single shot, avoiding problems of phase misregistration. However, EPI suffers from poor spatial resolution, severe distortion in areas of high magnetic susceptibility, ghosting artifacts, and requires high performance hardware. Overall, the poor image quality of EPI has greatly restricted the clinical use of DWI.

SUMMARY OF THE INVENTION

The present invention is a method and MR pulse sequence that provides diffusion weighting to NMR signals acquired with an MR imaging pulse sequence without sensitizing for bulk patient motion. More specifically, a preparatory pulse sequence is performed prior to the imaging pulse sequence which diffusion weights the longitudinal spin magnetization M_z using a gradient waveform that is first moment nulled such that phase shifts are produced in response to higher order patient motions, but not in response to the velocity of patient motion.

A general object of the invention is to provide a diffusion weighted preparatory pulse sequence that may be used prior to many different imaging pulse sequences and which is not sensitive to patient bulk motion during the scan. The diffusion weighted gradient waveform is shaped to gradient moment null phase shifts caused by the velocity of bulk patient movement, but is sensitive to acceleration and other higher order motions that are characteristic of diffusing spins.

BRIEF DESCRIPTION OF THE DRAWINGS

FIG. 1 is a block diagram of an MRI system which employs the present invention;

FIG. 2 is a graphic representation of a typical prior art DWI pulse sequence;

FIG. 3 is a graphic representation of a diffusion weighted gradient waveform used in the pulse sequence of FIG. 2;

FIG. 4 is a graphic representation of an alternative diffusion weighted gradient waveform that can be used in the pulse sequence of FIG. 2;

FIG. 5 is a graphic representation of a preferred embodiment of a preparation pulse sequence according to the present invention;

FIGS. 6 and 7 are graphic representations of alternative embodiments of preparation pulse sequences according to the present invention; and

FIG. 8 is a graphic representation of an alternative diffusion weighted gradient waveform which is nulled for both velocity and acceleration.

DESCRIPTION OF THE PREFERRED EMBODIMENT

Referring particularly to FIG. 1, the preferred embodiment of the invention is employed in an MRI system. The MRI system includes a workstation 10 having a display 12 and a keyboard 14. The workstation 10 includes a processor 16 which is a commercially available programmable machine running a commercially available operating system. The

workstation 10 provides the operator interface which enables scan prescriptions to be entered into the MRI system.

The workstation 10 is coupled to four servers: a pulse sequence server 18; a data acquisition server 20; a data processing server 22, and a data store server 23. In the preferred embodiment the data store server 23 is performed by the workstation processor 16 and associated disc drive interface circuitry. The remaining three servers 18, 20 and 22 are performed by separate processors mounted in a single enclosure and interconnected using a 64-bit backplane bus. The pulse sequence server 18 employs a commercially available microprocessor and a commercially available quad communication controller. The data acquisition server 20 and data processing server 22 both employ the same commercially available microprocessor and the data processing server 22 further includes one or more array processors based on commercially available parallel vector processors.

The workstation 10 and each processor for the servers 18, 20 and 22 are connected to a serial communications network. This serial network conveys data that is downloaded to the servers 18, 20 and 22 from the workstation 10 and it conveys tag data that is communicated between the servers and between the workstation and the servers. In addition, a high speed data link is provided between the data processing server 22 and the workstation 10 in order to convey image data to the data store server 23.

The pulse sequence server 18 functions in response to program elements downloaded from the workstation 10 to operate a gradient system 24 and an RF system 26. Gradient waveforms necessary to perform the prescribed scan are produced and applied to the gradient system 24 which excites gradient coils in an assembly 28 to produce the magnetic field gradients G_x , G_y , and G_z used for position encoding NMR signals. The gradient coil assembly 28 forms part of a magnet assembly 30 which includes a polarizing magnet 32 and a whole-body RF coil 34.

RF excitation waveforms are applied to the RF coil 34 by the RF system 26 to perform the prescribed magnetic resonance pulse sequence. Responsive NMR signals detected by the RF coil 34 are received by the RF system 26, amplified, demodulated, filtered and digitized under direction of commands produced by the pulse sequence server 18. The RF system 26 includes an RF transmitter for producing a wide variety of RF pulses used in MR pulse sequences. The RF transmitter is responsive to the scan prescription and direction from the pulse sequence server 18 to produce RF pulses of the desired frequency, phase and pulse amplitude waveform. The generated RF pulses may be applied to the whole body RF coil 34 or to one or more local coils or coil arrays.

The RF system 26 also includes one or more RF receiver channels. Each RF receiver channel includes an RF amplifier that amplifies the NMR signal received by the coil to which it is connected and a quadrature detector which detects and digitizes the I and Q quadrature components of the received NMR signal. The magnitude of the received NMR signal may thus be determined at any sampled point by the square root of the sum of the squares of the I and Q components:

$$M = \sqrt{I^2 + Q^2},$$

and the phase of the received NMR signal may also be determined:

$$\phi = \tan^{-1} Q/I.$$

The pulse sequence server 18 also optionally receives patient data from a physiological acquisition controller 36. The controller 36 receives signals from a number of different

5

sensors connected to the patient, such as ECG signals from electrodes or respiratory signals from a bellows. Such signals are typically used by the pulse sequence server **18** to synchronize, or “gate”, the performance of the scan with the subject’s respiration or heart beat.

The pulse sequence server **18** also connects to a scan room interface circuit **38** which receives signals from various sensors associated with the condition of the patient and the magnet system. It is also through the scan room interface circuit **38** that a patient positioning system **40** receives commands to move the patient to desired positions during the scan.

It should be apparent that the pulse sequence server **18** performs real-time control of MRI system elements during a scan. As a result, it is necessary that its hardware elements be operated with program instructions that are executed in a timely manner by run-time programs. The description components for a scan prescription are downloaded from the workstation **10** in the form of objects. The pulse sequence server **18** contains programs which receive these objects and converts them to objects that are employed by the run-time programs.

The digitized NMR signal samples produced by the RF system **26** are received by the data acquisition server **20**. The data acquisition server **20** operates in response to description components downloaded from the workstation **10** to receive the real-time NMR data and provide buffer storage such that no data is lost by data overrun. In some scans the data acquisition server **20** does little more than pass the acquired NMR data to the data processor server **22**. However, in scans which require information derived from acquired NMR data to control the further performance of the scan, the data acquisition server **20** is programmed to produce such information and convey it to the pulse sequence server **18**. For example, during prescans NMR data is acquired and used to calibrate the pulse sequence performed by the pulse sequence server **18**. Also, navigator signals may be acquired during a scan and used to adjust RF or gradient system operating parameters or to control the view order in which k-space is sampled. And, the data acquisition server **20** may be employed to process NMR signals used to detect the arrival of contrast agent in an MRA scan. In all these examples the data acquisition server **20** acquires NMR data and processes it in real-time to produce information which is used to control the scan.

The data processing server **22** receives NMR data from the data acquisition server **20** and processes it in accordance with description components downloaded from the workstation **10**. Such processing may include, for example: Fourier transformation of raw k-space NMR data to produce two or three-dimensional images; the application of filters to a reconstructed image; the performance of a backprojection image reconstruction of acquired NMR data; the calculation of functional MR images; the calculation of motion or flow images and the reconstruction of DWI images according to the present invention.

Images reconstructed by the data processing server **22** are conveyed back to the workstation **10** where they are stored. Real-time images are stored in a data base memory cache (not shown) from which they may be output to operator display **12** or a display **42** which is located near the magnet assembly **30** for use by attending physicians. Batch mode images or selected real time images are stored in a host database on disc storage **44**. When such images have been reconstructed and transferred to storage, the data processing server **22** notifies the data store server **23** on the workstation **10**. The workstation **10** may be used by an operator to archive the images, produce films, or send the images via a network to other facilities.

6

The present invention is a method for operating the MRI system such that DWI images of the subject being scanned are produced. This method is embodied in a pulse sequence that is downloaded to the pulse sequence server **18**. The pulse sequence server **18** executes the downloaded pulse sequence and in response the MRI system carries out the steps in the method.

Referring particularly to FIG. **5**, a DWI preparatory pulse sequence indicated generally by dashed lines **200** is performed prior to an imaging pulse sequence **202**. The imaging pulse sequence **202** may be of any type, including multi-shot methods such as FSE, SPGR and SSFP.

As will be explained in more detail below, unlike conventional DWI which encodes DW information into transverse magnetization, the preparatory pulse sequence **200** encodes the diffusion weighted information into the longitudinal magnetization M_z of the spins that are the subject of the scan. Any imaging pulse sequence **202** may then be used to acquire the NMR signals that are produced by this diffusion weighted spin magnetization.

Referring still to FIG. **5**, in this preferred embodiment a 90_x° rf excitation pulse **204** is applied to tip the longitudinal magnetization M_z into the transverse plane to produce transverse magnetization M_{xy} . This is followed by two 180_y° refocusing pulses **206** and **208**, and then finally a third -90_x° rf “tip-up” pulse **210**. The absolute phase of these rf pulses is not important, it is their relative phase that matters. A $[270_x^\circ]$ $[-360_x^\circ]$ pulse pair is an alternative commonly used by other tip-up methods in order to compensate for B_1 and B_0 inhomogeneities. After the tip-up pulse **210**, large spoiler gradients are used to crush residual transverse magnetization (not shown in the figures). As with other preparation pulses, the RF pulses are non-selective (hard pulses), although one could easily use spatially selective pulses as well, which would require the use of slice selection gradients (not shown).

In the preferred embodiments two rf refocusing pulses **206** and **208** are employed to ensure that the diffusion weighted transverse magnetization is efficiently tipped back up to the longitudinal axis by the rf excitation pulse **210**. More specifically, the times between the respective rf pulses **204**, **206**, **208** and **210** are set such that the diffusion weighted transverse magnetization refocuses at the moment the tip-up rf excitation pulse **210** is produced. Two identical refocusing pulses are employed so that any imperfections in one refocusing pulse is offset by the second refocusing pulse.

The preferred preparatory pulse sequence **200** also includes a DWI gradient waveform comprised of a first lobe **212** played out between the rf pulses **204** and **206**, a second gradient lobe **214** played out between the RF pulses **206** and **208**, and a third gradient lobe **216** played out between rf pulses **208** and **210**. These gradient lobes **212**, **214** and **216** are the sum of the applied component gradients G_x , G_y , and G_z produced by the MRI system, and by changing these component values the DW gradient may be oriented in any direction. The gradient lobes **212** and **216** are equal in size (i.e., area) and their sum is equal to the size of the gradient lobe **214**. The total diffusion weighting b of this DWI gradient waveform is:

$$b=2(\gamma\delta G)^2(\Delta-\delta/3).$$

The 0^{th} and 1^{st} gradient moments are nulled by making the time intervals t_1 and t_2 between rf pulses equal. As a result, phase shifts occur in the transverse magnetization produced by the tip-down rf pulse **204** as a result of higher order movements of spins, but no phase shifts occur due to bulk movement velocity of the patient in the direction of the DW gradient. When the spin magnetization is tipped back by the rf

pulse **210**, the resulting longitudinal magnetization is diminished in amplitude at voxel locations where diffusion is taking place, but is not diminished due to patient bulk motion. In other words, the longitudinal magnetization examined by the following imaging pulse sequence **202** is diffusion weighted, but is not sensitive to bulk patient motion. More importantly, there are no significant phase misregistrations in the image data acquired in different shots of the imaging pulse sequence **202** due to patient motion.

The imaging pulse sequence **202** is performed immediately following the preparatory sequence **200**, and depending on the particular imaging pulse sequence used, one or more views of k-space data is acquired. It is diffusion-weighted k-space data as a result of the preparatory pulse sequence **200**. The preparatory pulse sequence **200** and imaging pulse sequence **202** are repeated as many times as needed to acquire a complete k-space data set from which an image is reconstructed. Any standard image reconstruction normally used with the chosen image pulse sequence may be used.

Alternative embodiments of the DW preparation pulse sequence are depicted in FIGS. **6** and **7**. In the embodiment shown in FIG. **6**, the only difference is in the separation of the middle gradient lobe into two equal sized gradient lobes **218** and **220** separated by the time t_b . This embodiment is used when larger values of diffusion weighting b are required. This is achieved by increasing the time t_b .

The embodiment of the invention depicted in FIG. **7** employs the same sequence of rf pulses **204**, **206**, **208** and **210**, but the DW gradient waveform is different. The DW gradient waveform is played out between the two rf refocusing pulses **206** and **208** and it includes three lobes **222**, **224** and **226**. The lobes **222** and **226** have the same polarity and size while the middle lobe **224** has the opposite polarity and is equal in size to the sum of the lobes **222** and **226**. This embodiment is more applicable to situations in which low diffusion weighting values b are used and the duration of the preparatory pulse sequence **200** is to be kept to a minimum.

In the above-described embodiments the diffusion-weighted gradient waveform is zero moment and first moment nulled and is sensitive to acceleration and higher order motion in the subject being examined. Sensitivity to acceleration and high order movements of spins provides the necessary diffusion weighting. In some clinical applications it may be necessary to desensitize the diffusion weighted

gradient waveform to subject acceleration by adding second moment nulling. Such a diffusion gradient waveform is shown in FIG. **8**.

Referring particularly to FIG. **8**, the second moment nulled gradient waveform is anti-symmetrical about an axis **240** and includes a bipolar waveform comprised of lobes **242** and **244** to one side of axis **240** and a bipolar waveform comprised of lobes **246** and **248** to the other side. The gradient lobes **242** and **248** are equal in size ($G\delta$) and opposite in polarity, as are the gradient lobes **244** and **246** which are larger ($G\delta(1+\sqrt{2})$). As with the gradient waveforms described above, this second moment nulled diffusion gradient waveform can be separated to increase the diffusion weighting, and 180° rf refocusing pulses can be applied during its playout to enable inversion of the polarity of gradient lobes.

The invention claimed is:

1. A method for producing a diffusion-weighted image with a magnetic resonance imaging (MRI) system, the steps comprising:

- a) performing a preparation pulse sequence with the MRI system that diffusion weights longitudinal magnetization in a subject, the preparation pulse sequence including:
 - a)i) applying a radio frequency (RF) excitation pulse to produce transverse spin magnetization;
 - a)ii) applying a first moment nulled diffusion weighting gradient waveform to diffusion weight the transverse spin magnetization;
 - a)iii) applying an RF excitation pulse to produce diffusion-weighted longitudinal spin magnetization from the diffusion weighted transverse magnetization; and
 - a)iv) applying an RF refocusing pulse such that the diffusion weighted transverse magnetization is refocused when the RF excitation pulse is produced in step a)iii);
- b) performing an imaging pulse sequence following step a);
- c) repeating steps a) and b) as necessary to acquire a set of data from which an image can be reconstructed; and
- d) reconstructing a diffusion-weighted image from the acquired set of data.

2. The method as recited in claim **1** in which the diffusion-weighted gradient waveform is also second moment nulled.

3. The method as recited in claim **1** in which a pair of RF refocusing pulses are applied during step a)iv).

* * * * *