



US007920942B2

(12) **United States Patent**
Lasseter et al.

(10) **Patent No.:** **US 7,920,942 B2**
(45) **Date of Patent:** **Apr. 5, 2011**

(54) **CONTROL OF COMBINED STORAGE AND GENERATION IN DISTRIBUTED ENERGY RESOURCES**

5,811,960 A 9/1998 Van Sickle et al.
6,014,015 A 1/2000 Thorne et al.
6,111,764 A 8/2000 Atou et al.

(Continued)

(75) Inventors: **Robert H. Lasseter**, Madison, WI (US);
Paolo Piagi, Cambridge, MA (US)

FOREIGN PATENT DOCUMENTS

EP 1286444 2/2003

(Continued)

(73) Assignee: **Wisconsin Alumni Research Foundation**, Madison, WI (US)

OTHER PUBLICATIONS

(*) Notice: Subject to any disclaimer, the term of this patent is extended or adjusted under 35 U.S.C. 154(b) by 970 days.

Son, Kwang, et al., "A Newton-Type Current Injection Model of UPFC for Studying Low-Frequency Oscillations," Power Engineering Society General Meeting, IEEE vol. 4, Jul. 13-17, 2003. (Abstract).

(Continued)

(21) Appl. No.: **11/681,017**

(22) Filed: **Mar. 1, 2007**

Prior Publication Data

Primary Examiner — Paul L Rodriguez

Assistant Examiner — Sheela Rao

(74) *Attorney, Agent, or Firm* — Bell & Manning, LLC

US 2009/0326724 A1 Dec. 31, 2009

(51) **Int. Cl.**
G05D 3/12 (2006.01)

(52) **U.S. Cl.** **700/286; 700/291; 700/295; 323/212**

(58) **Field of Classification Search** **700/286, 700/291, 295, 297, 298; 323/212**
See application file for complete search history.

(57) **ABSTRACT**

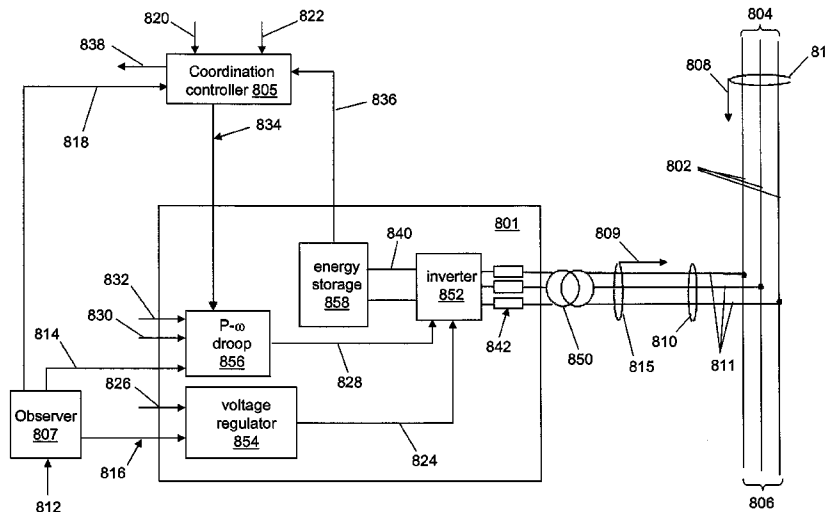
A microsource is provided, which includes an energy storage device, a power generation device, and a controller. The energy storage device is operably coupled for power transfer to a load through a first power bus. The power generation device is operably coupled for power transfer to the load through a second power bus. The controller determines a mode of operation for the energy storage device and the power generation device based on an energy level of the energy storage device and on the load; determines minimum power set points and maximum power set points for the energy storage device and the power generation device based on the determined mode of operation, on a storage output power measured at the first power bus, and on a generation output power measured at the second power bus; and controls an output power of the energy storage device and an output power of the power generation device based on the determined minimum and maximum power set points.

(56) **References Cited**

U.S. PATENT DOCUMENTS

4,096,394 A	6/1978	Ullmann et al.
4,315,163 A	2/1982	Bienville
5,041,959 A	8/1991	Walker
5,198,698 A	3/1993	Paul et al.
5,329,222 A	7/1994	Gyugyi et al.
5,536,976 A	7/1996	Churchill
5,559,704 A	9/1996	Vanek et al.
5,563,802 A	10/1996	Plahn et al.
5,596,492 A	1/1997	Divan et al.
5,614,770 A	3/1997	Suelzle
5,710,699 A	1/1998	King et al.
5,745,356 A	4/1998	Tassinato et al.

19 Claims, 19 Drawing Sheets



U.S. PATENT DOCUMENTS

6,134,124	A	10/2000	Jungreis et al.	
6,172,432	B1	1/2001	Schnackenberg et al.	
6,188,205	B1	2/2001	Tanimoto et al.	
6,219,591	B1	4/2001	Vu et al.	
6,219,623	B1	4/2001	Wills	
6,249,411	B1	6/2001	Hemena et al.	
6,252,310	B1	6/2001	Wilhelm	
6,285,917	B1	9/2001	Sekiguchi et al.	
6,288,456	B1	9/2001	Cratty	
6,347,027	B1	2/2002	Nelson et al.	
6,356,471	B1	3/2002	Fang	
6,359,423	B1	3/2002	Noro	
6,452,289	B1*	9/2002	Lansberry et al.	307/25
6,465,910	B2	10/2002	Young et al.	
6,693,809	B2	2/2004	Engler	
6,703,719	B1*	3/2004	McConnell	290/52
6,787,933	B2	9/2004	Claude et al.	
6,812,586	B2	11/2004	Wacknow et al.	
6,870,279	B2	3/2005	Gilbreth et al.	
7,042,110	B2	5/2006	Mikhail et al.	
7,069,673	B2	7/2006	Kagoshima et al.	
7,116,010	B2	10/2006	Lasseter et al.	
7,346,462	B2*	3/2008	Delmerico	702/60
7,706,164	B2*	4/2010	Nishi et al.	363/146
2002/0169523	A1*	11/2002	Ross et al.	700/286
2003/0036806	A1	2/2003	Schienbein et al.	
2004/0051387	A1	3/2004	Lasseter et al.	
2004/0080165	A1	4/2004	Geis et al.	
2005/0165511	A1*	7/2005	Fairlie	700/286
2005/0234599	A1*	10/2005	Kurokami et al.	700/286
2006/0208574	A1	9/2006	Lasseter et al.	
2006/0276938	A1*	12/2006	Miller	700/295
2008/0114499	A1*	5/2008	Hakim et al.	700/291

FOREIGN PATENT DOCUMENTS

EP 1383224 1/2004

OTHER PUBLICATIONS

Lasseter, Robert, Kevin Tomsovic, and Paolo Piagi. "Scenarios for Distributed Technology Applications with Steady State and Dynamic Models of Loads and Micro-Sources," Consortium for Electric Reliability Technology Solutions. Apr. 14, 2000.

DOE News, The DER Weekly, vol. 2, No. 10, pp. 1-4. Mar. 9, 2001.

Lasseter, Robert, et al. "White Paper on Integration of Distributed Energy Resources the CERTS MicroGrid Concept," Consortium for Electric Reliability Technology Solutions, pp. 1-27. Apr. 2002.

Lasseter, Robert, "MicroGrids," IEEE, No. 0-7803-7322-7, pp. 305-308. Jul. 2002.

USPTO, Notice of Allowance issued in U.S. Appl. No. 11/681,024 on Apr. 2, 2010, pp. 1-7.

An Office Action issued in U.S. Appl. No. 11/681,024 mailed on May 27, 2009.

PCT International Search Report for PCT/US2008/054566 dated Jul. 11, 2008.

PCT International Search Report for PCT/US2008/054572 dated Jul. 11, 2008.

PCT International Search Report for PCT/US2008/054577 dated Jul. 11, 2008.

Notice of Allowance issued in U.S. Appl. No. 11/681,014 mailed Jul. 30, 2009.

* cited by examiner

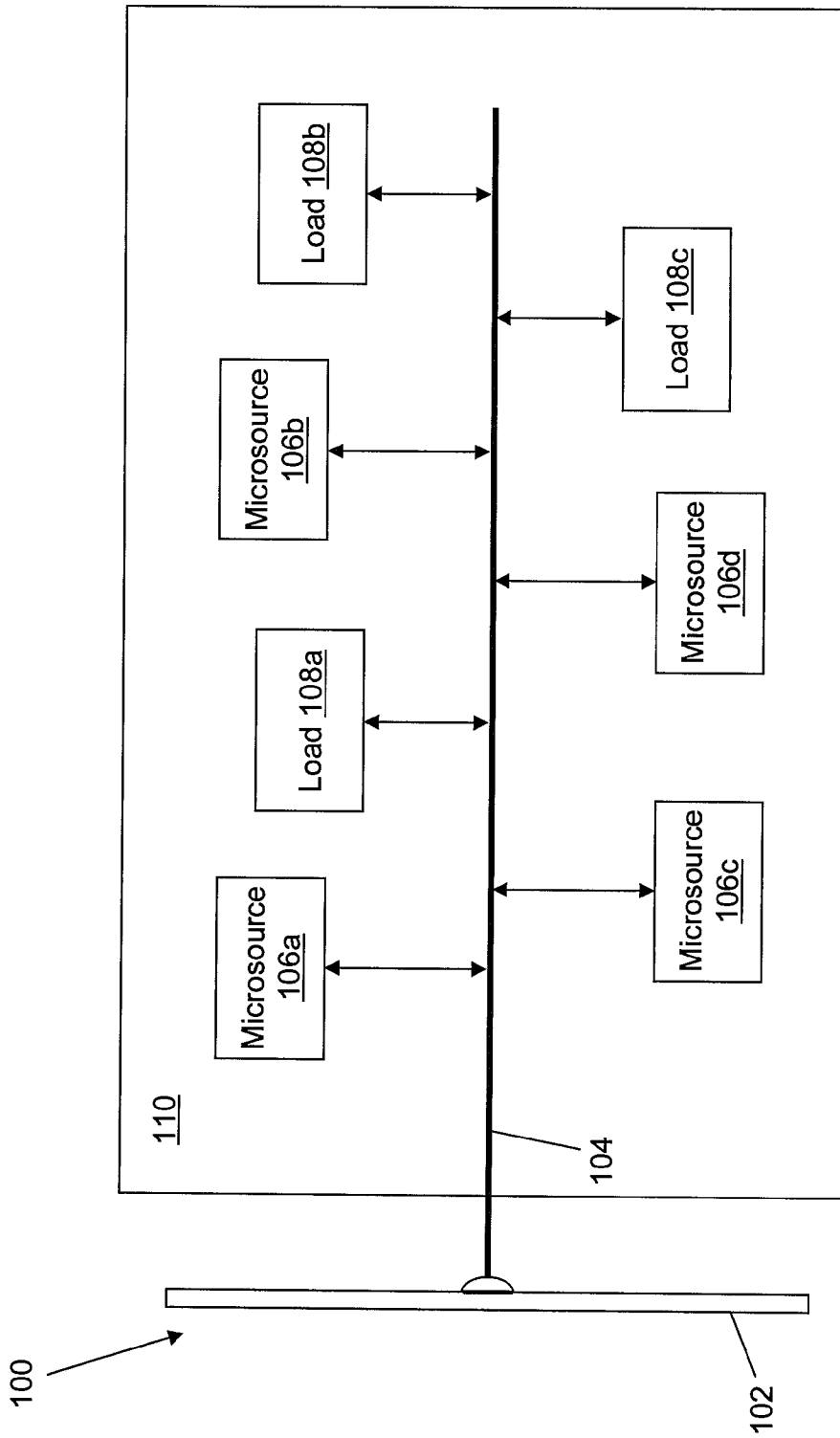
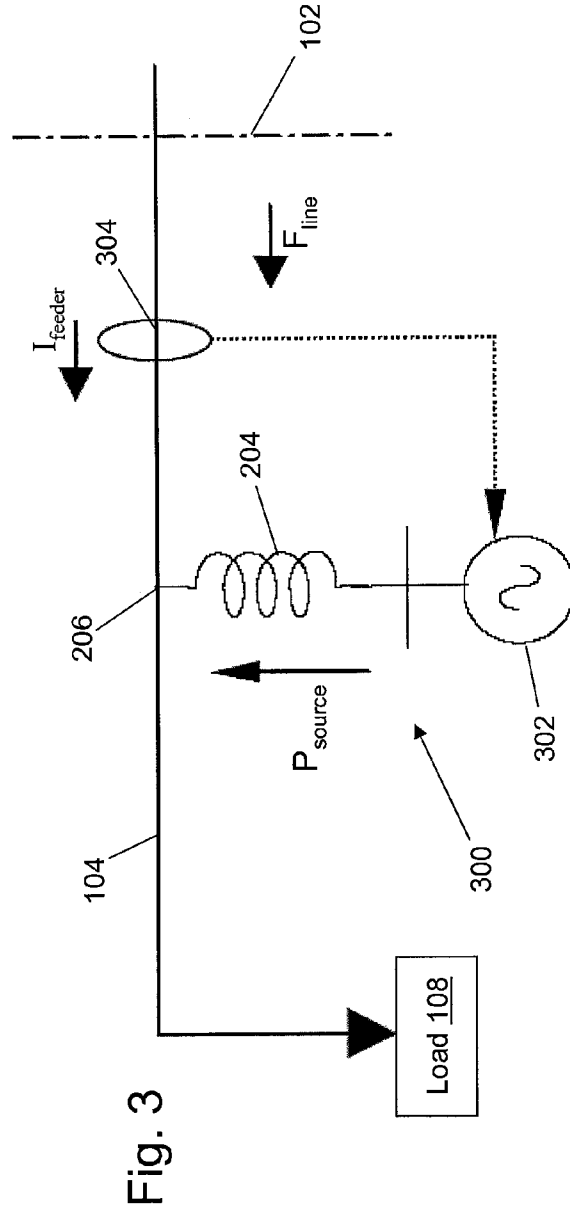
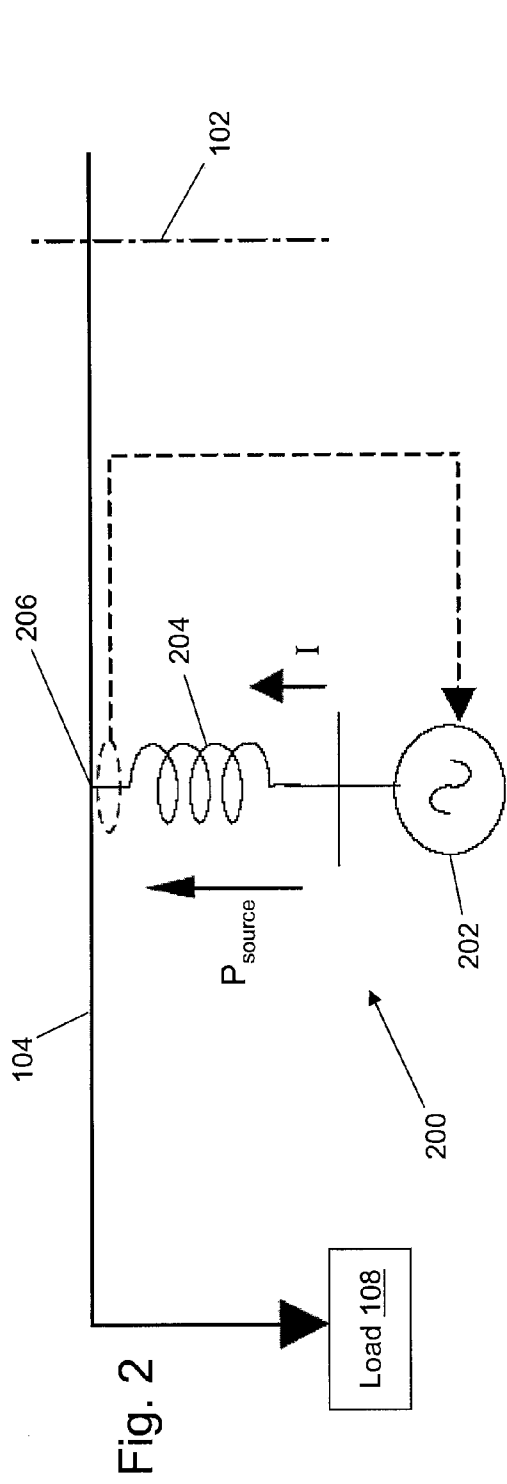


Fig. 1



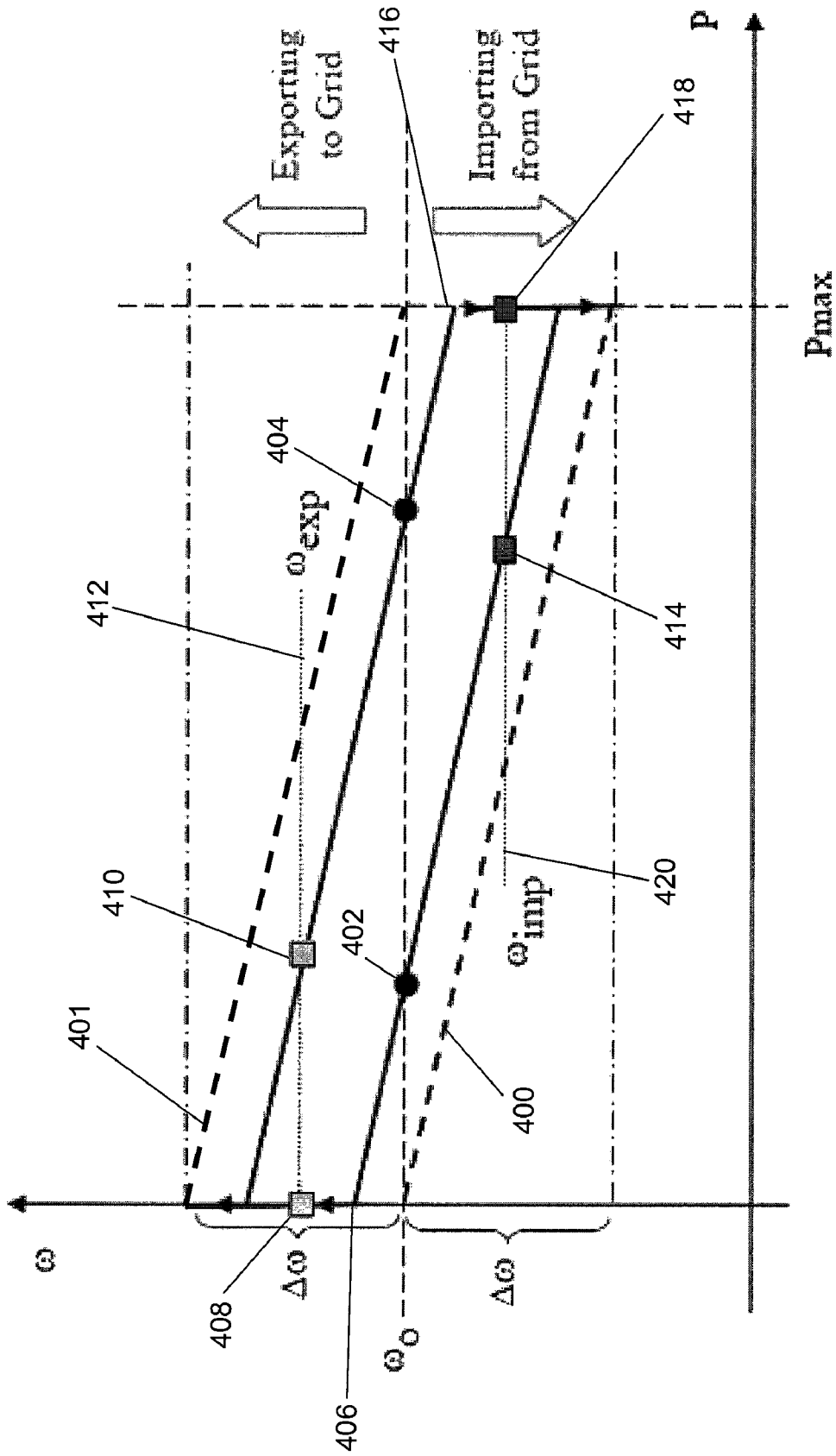


Fig. 4

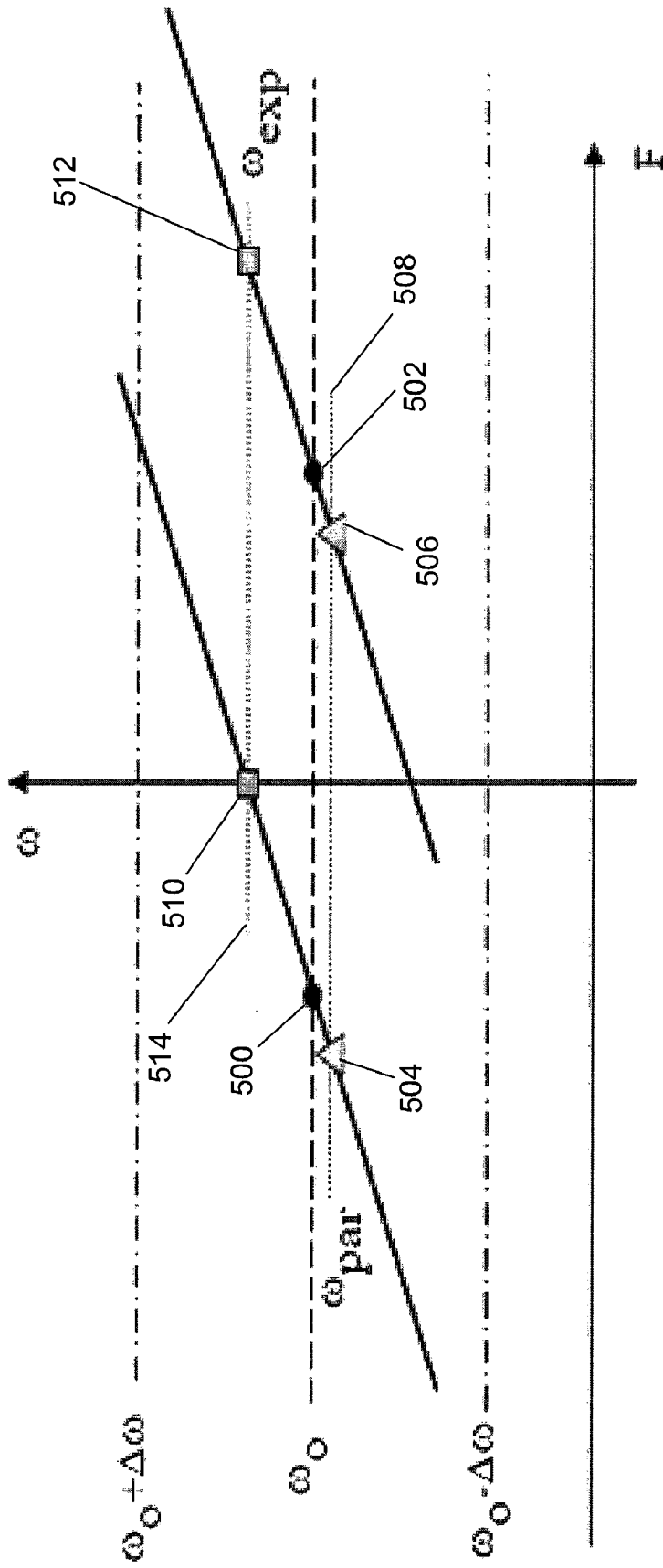


Fig. 5

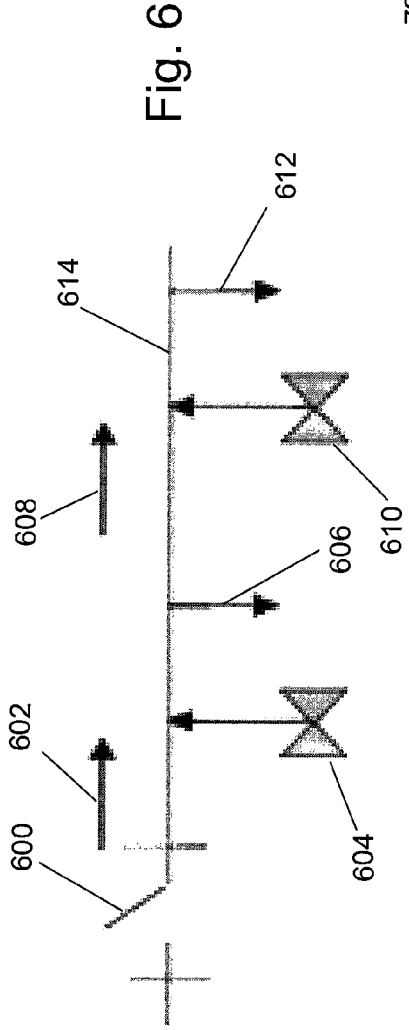


Fig. 6

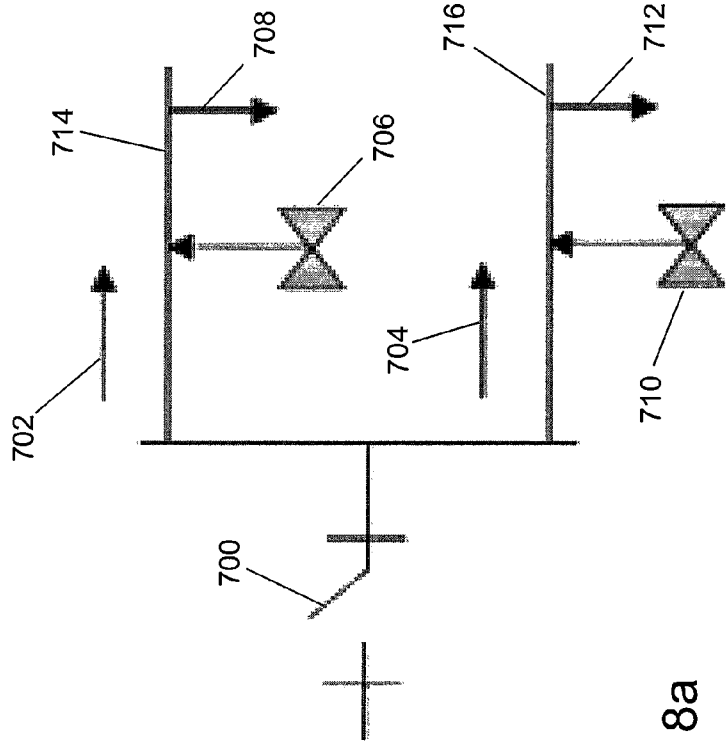


Fig. 7

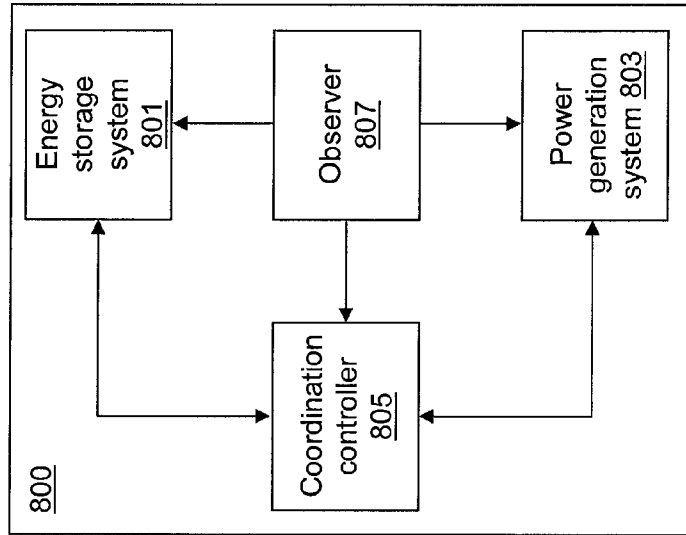


Fig. 8a

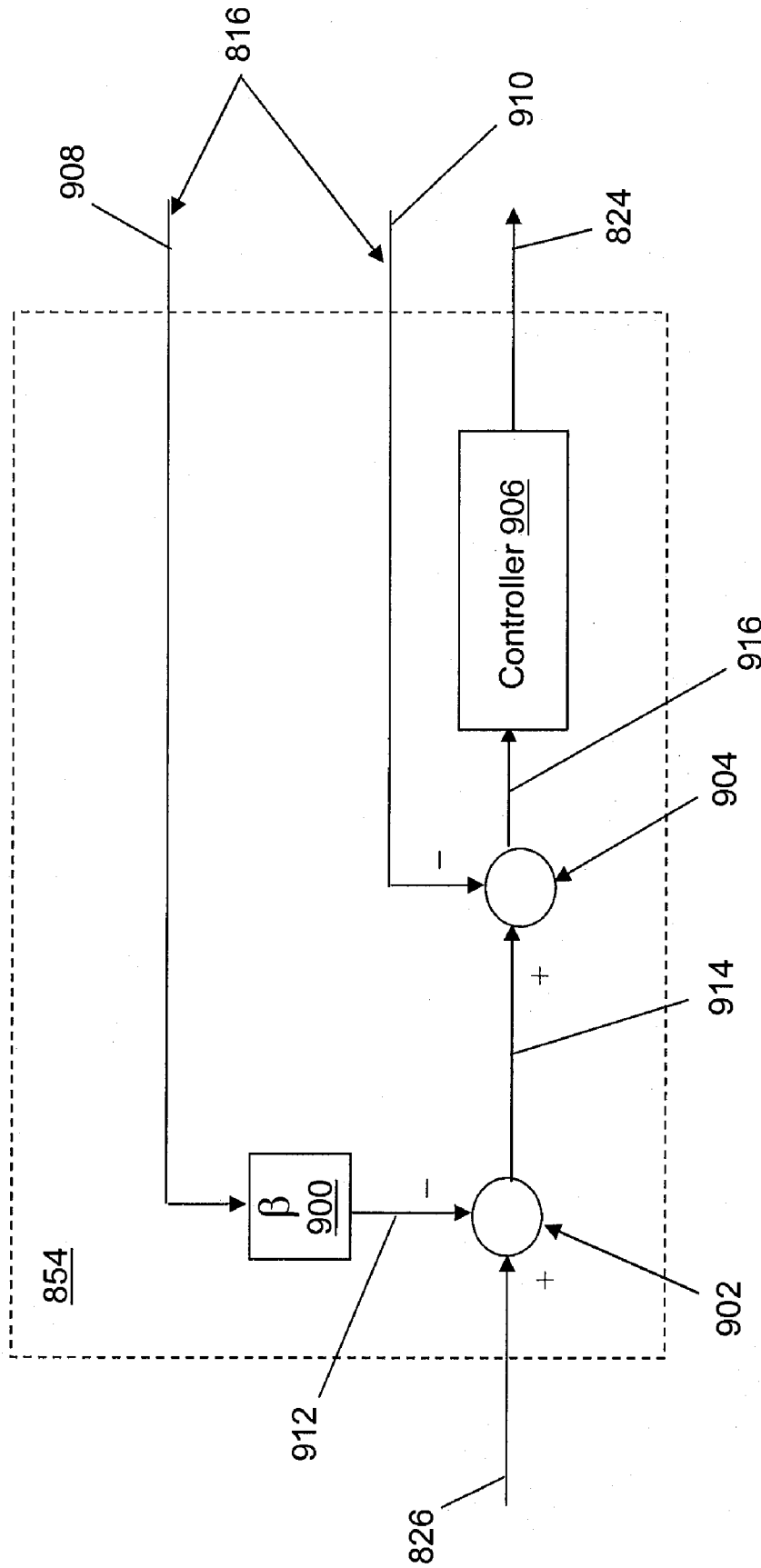


Fig. 9a

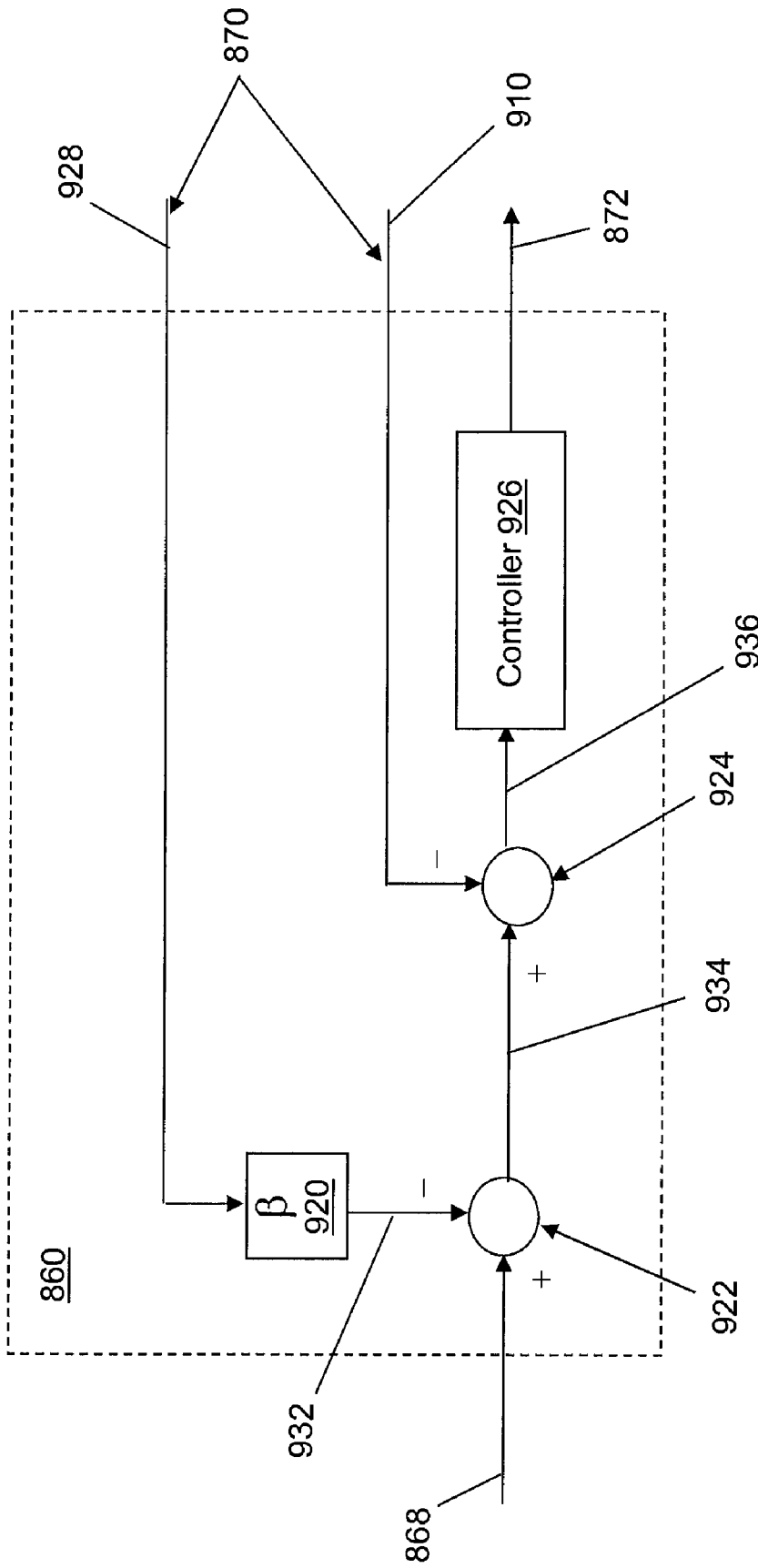


Fig. 9b

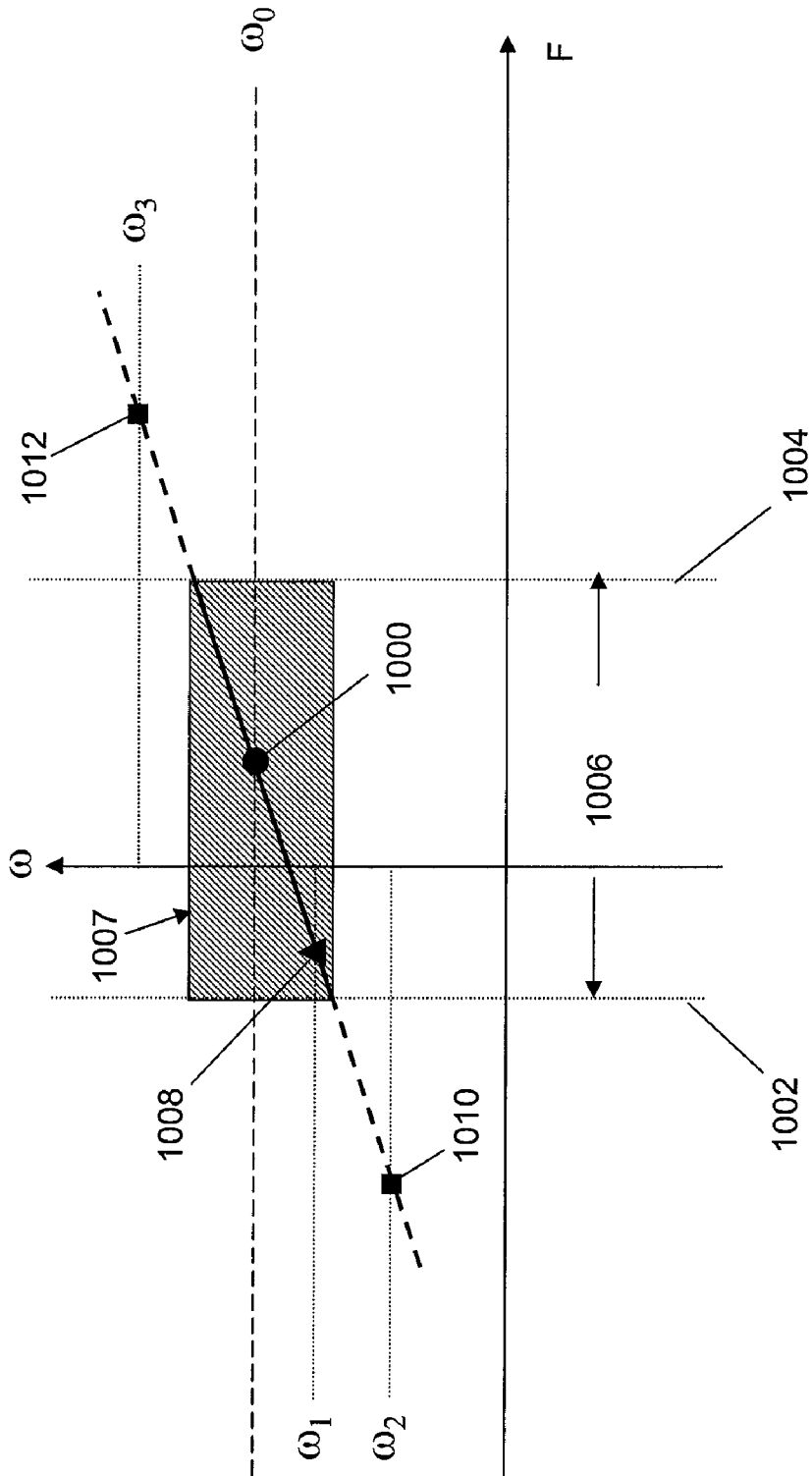


Fig. 10

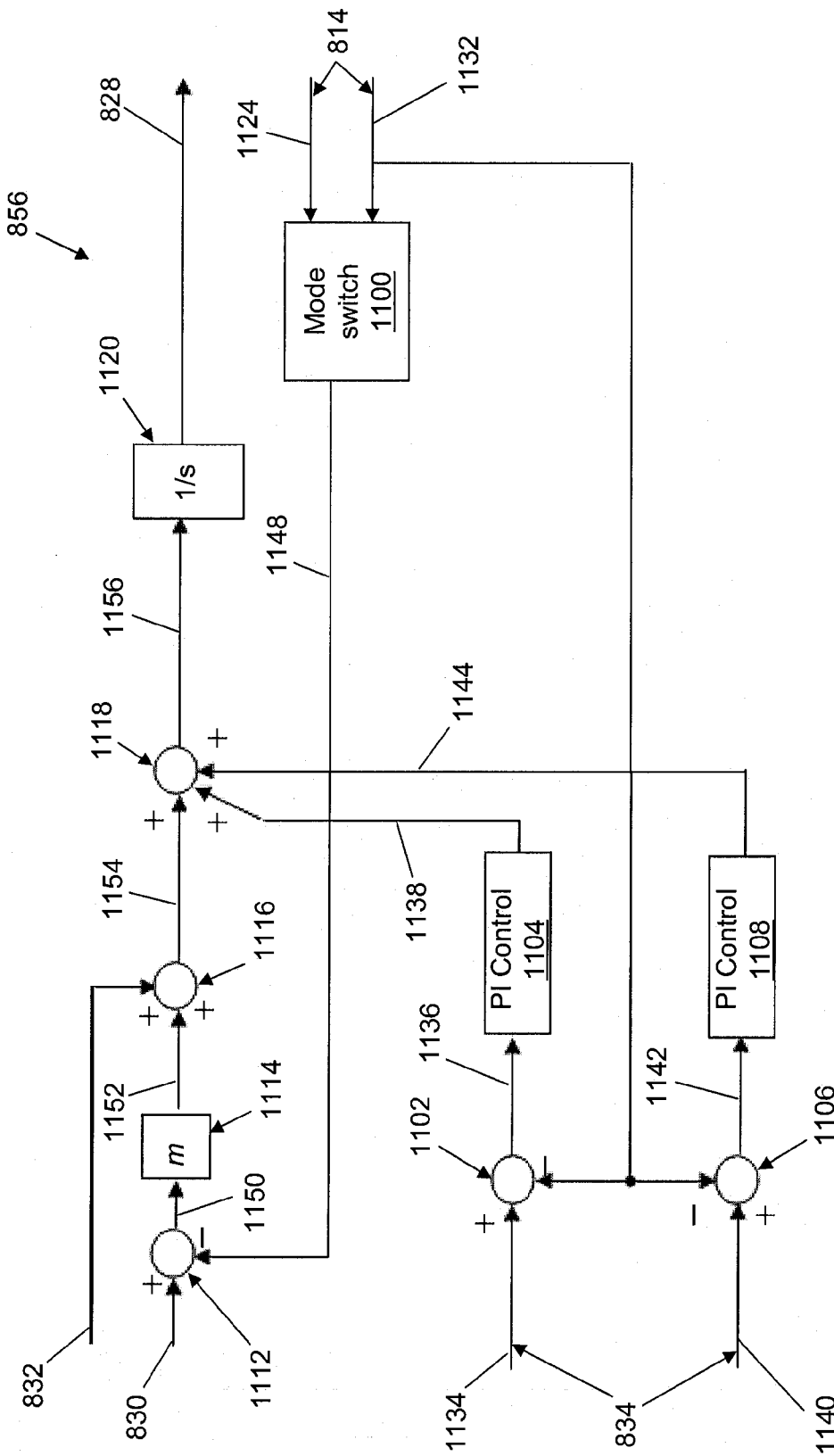


Fig. 11a

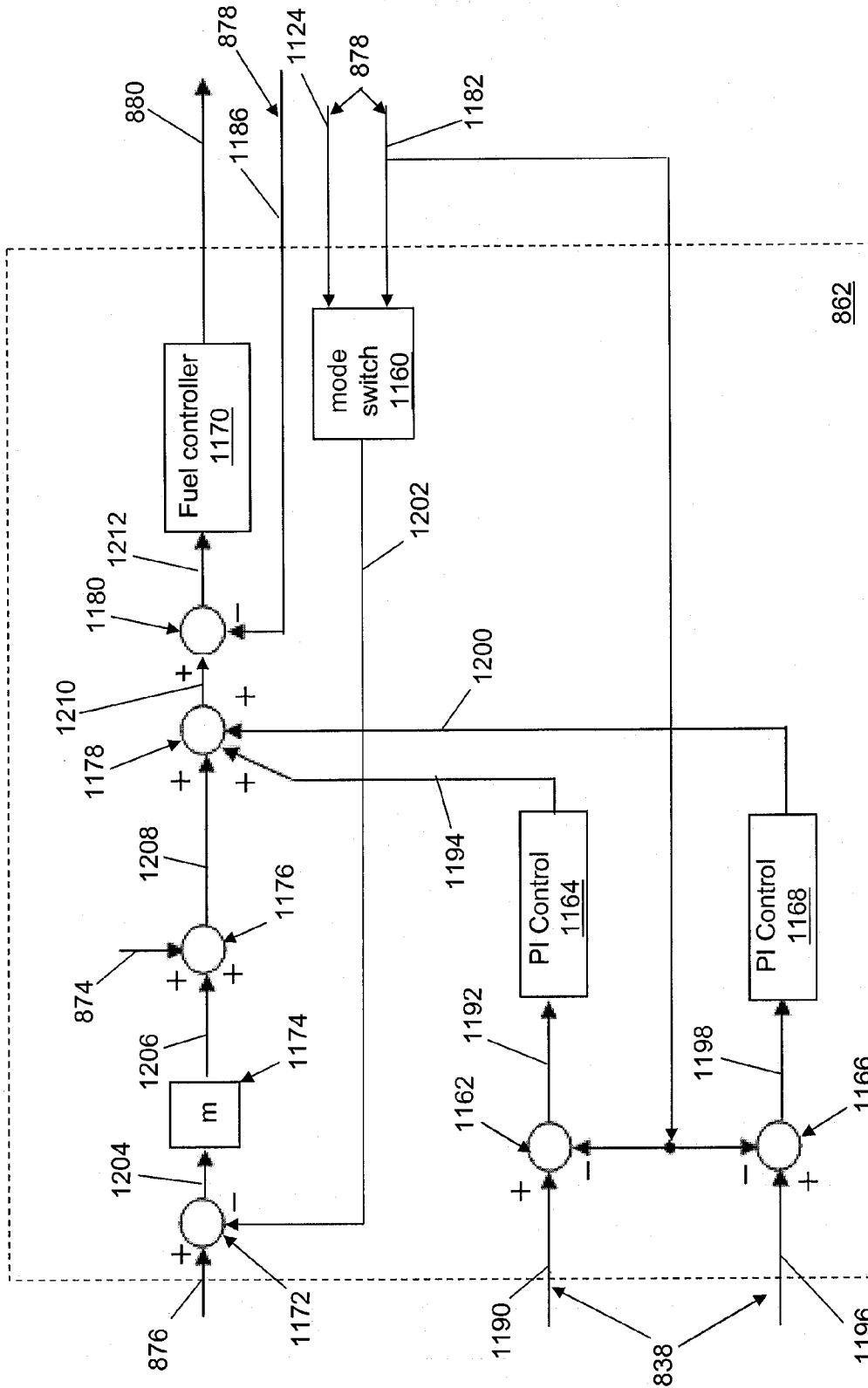


Fig. 11b

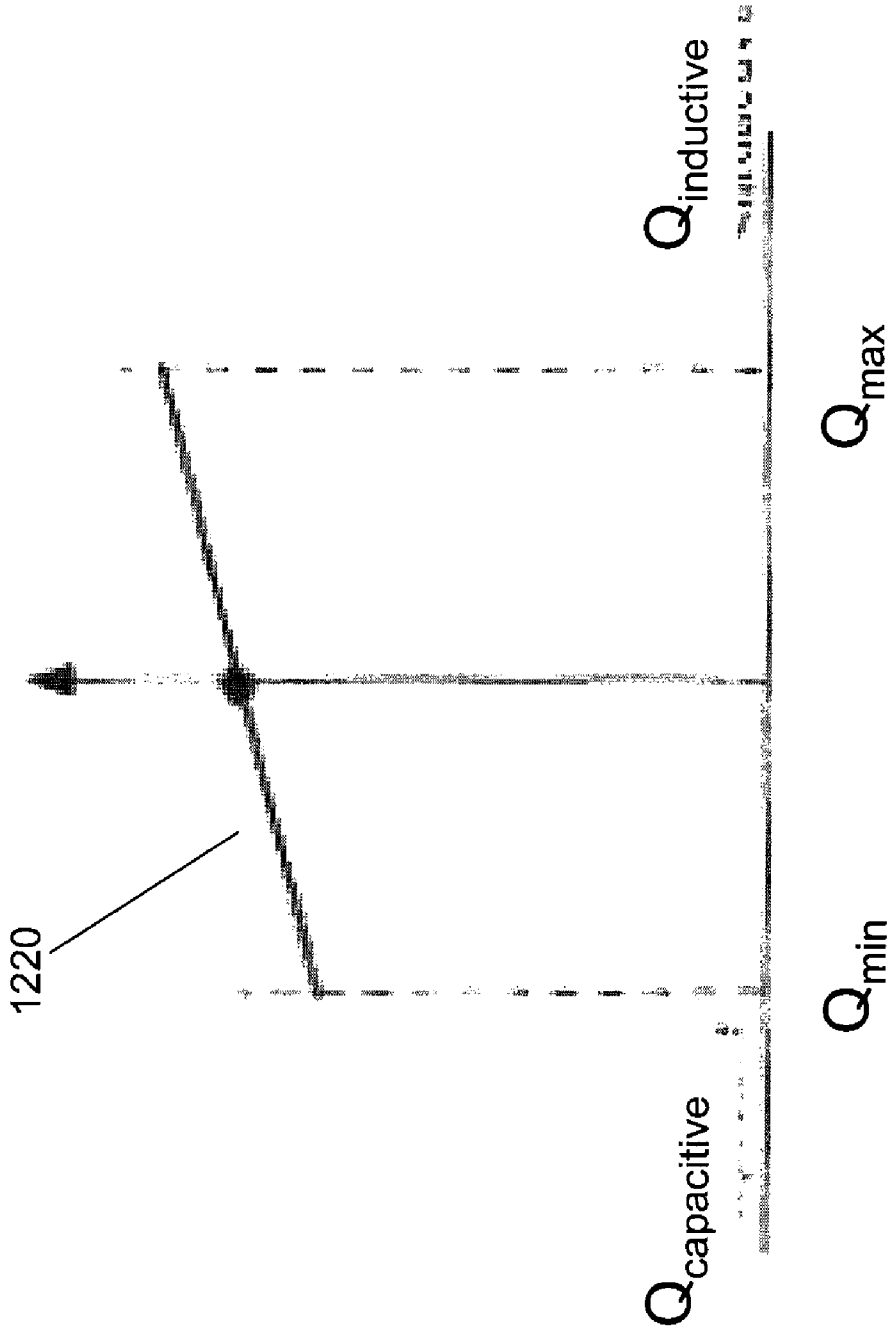


Fig. 12

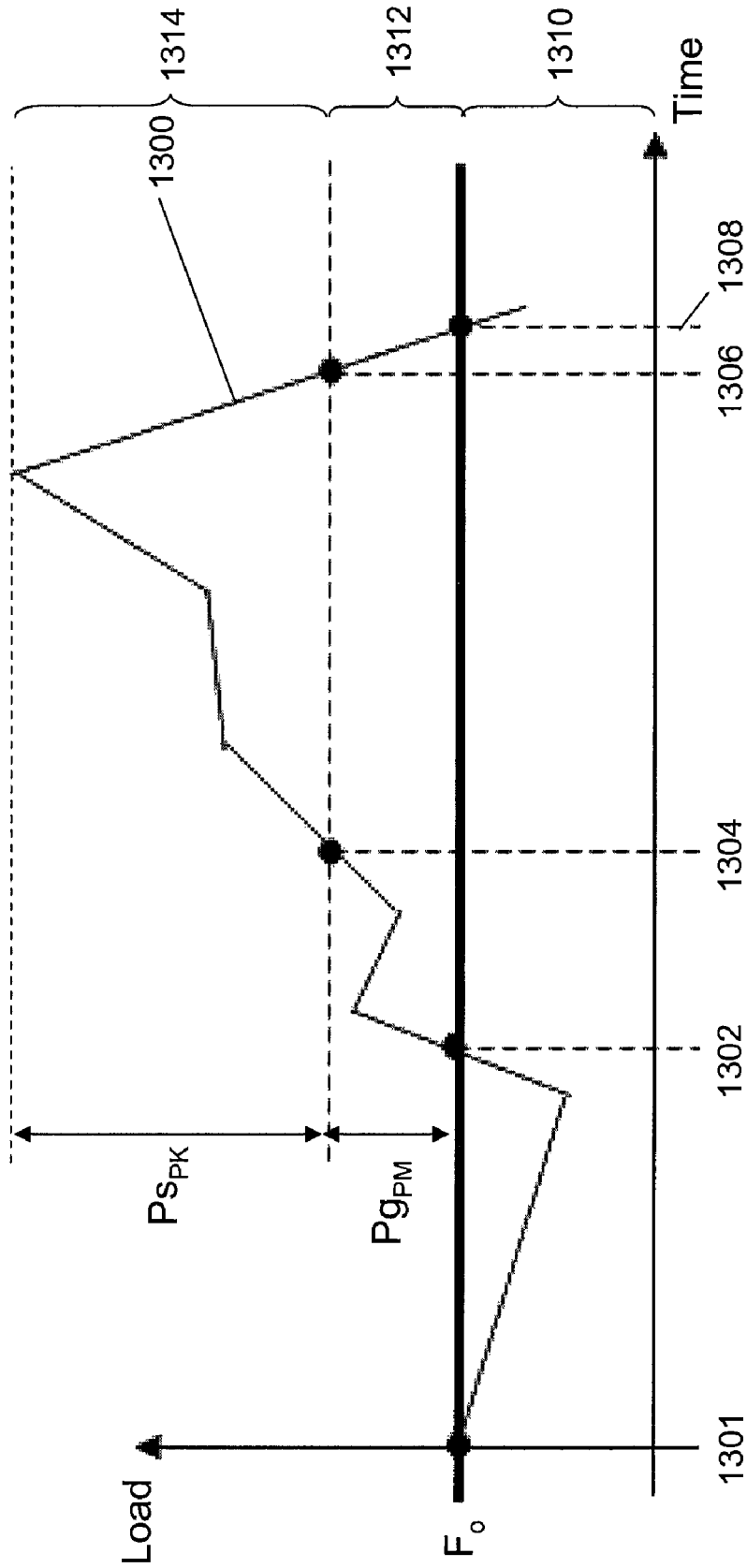


Fig. 13

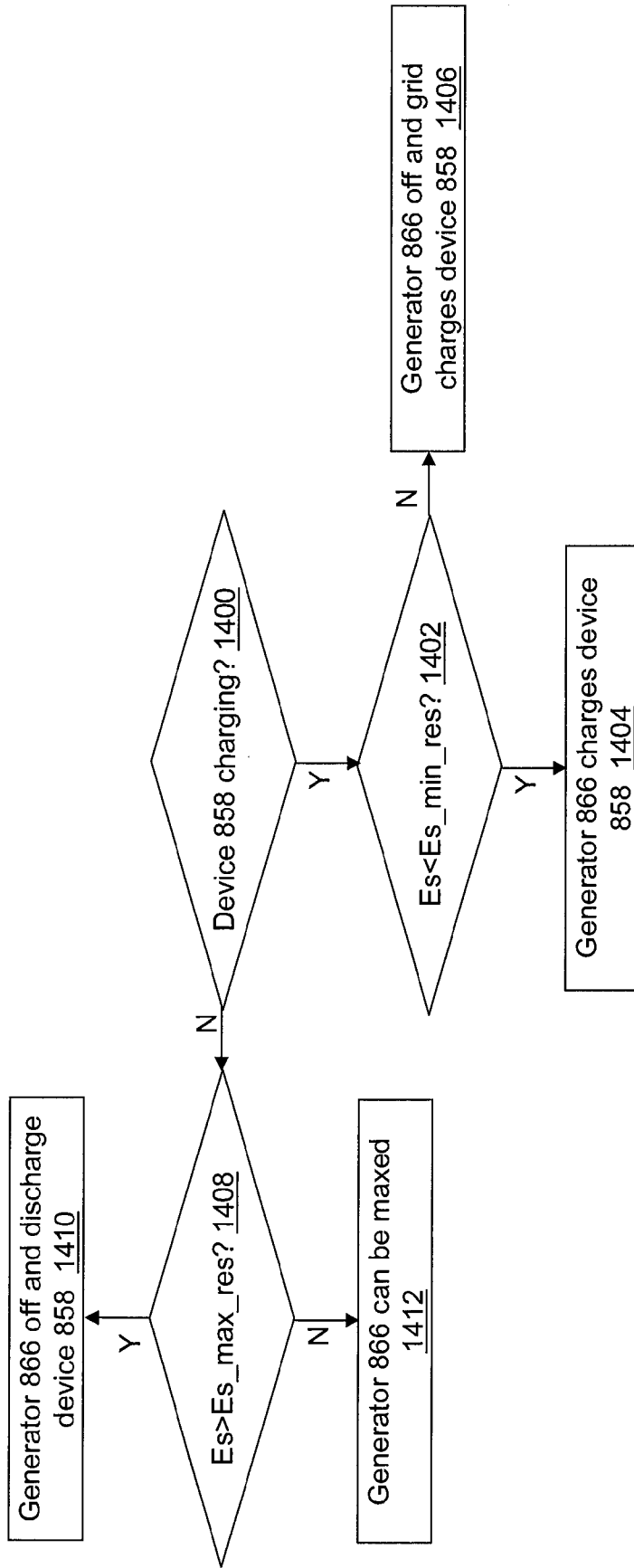


Fig. 14a

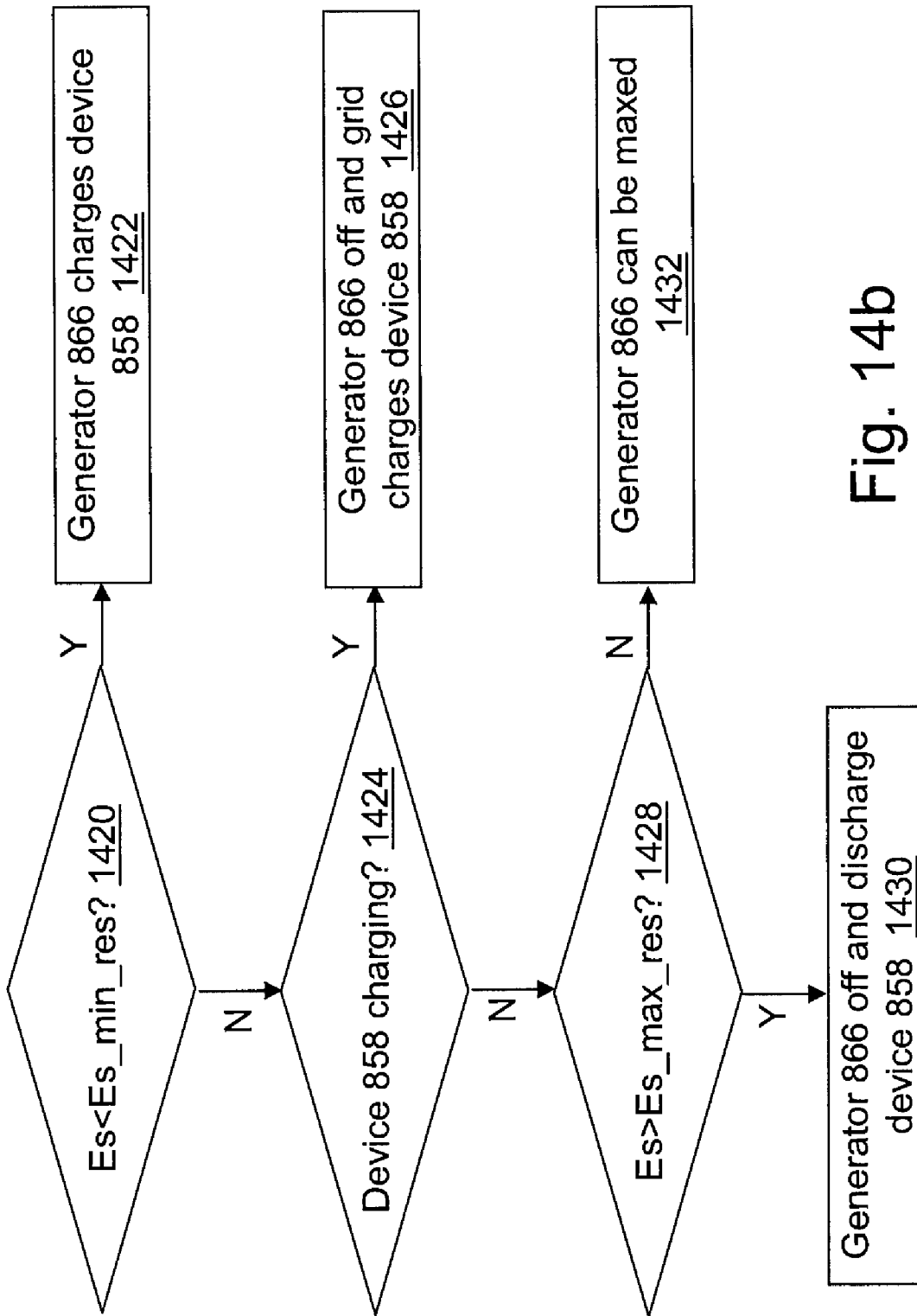


Fig. 14b

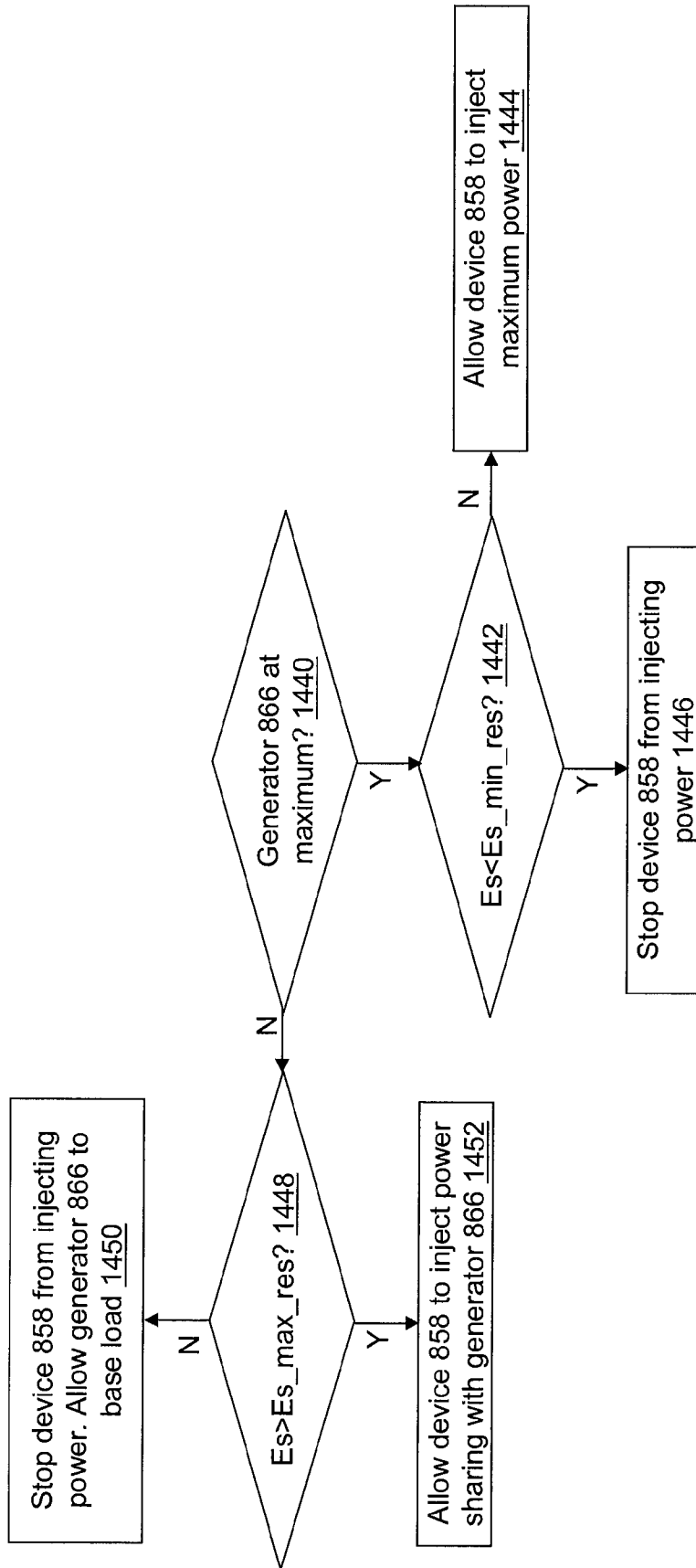


Fig. 14c

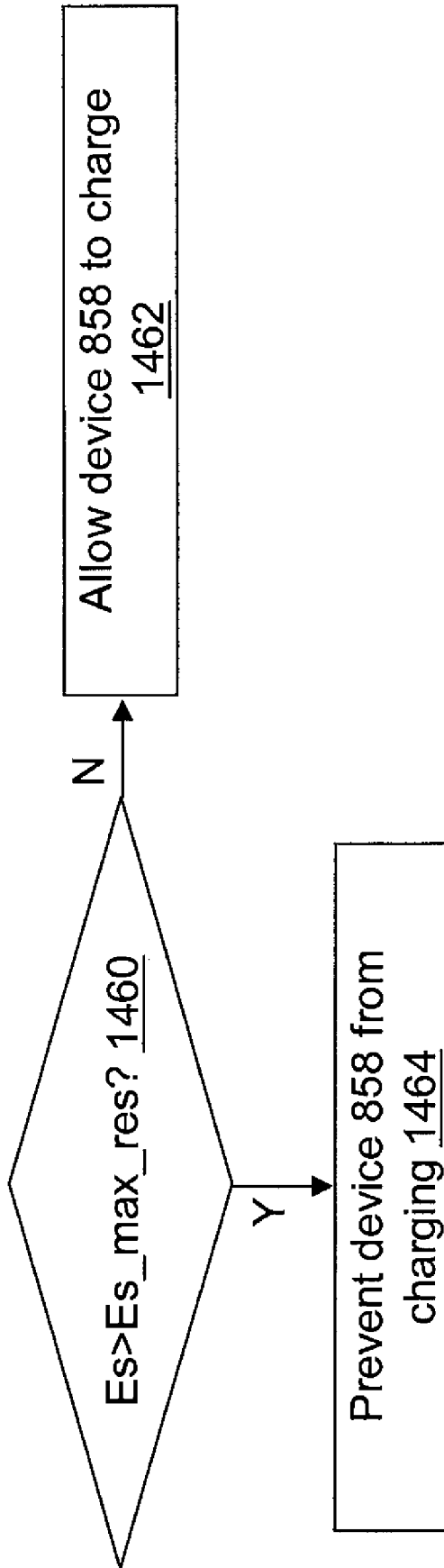


Fig. 14d

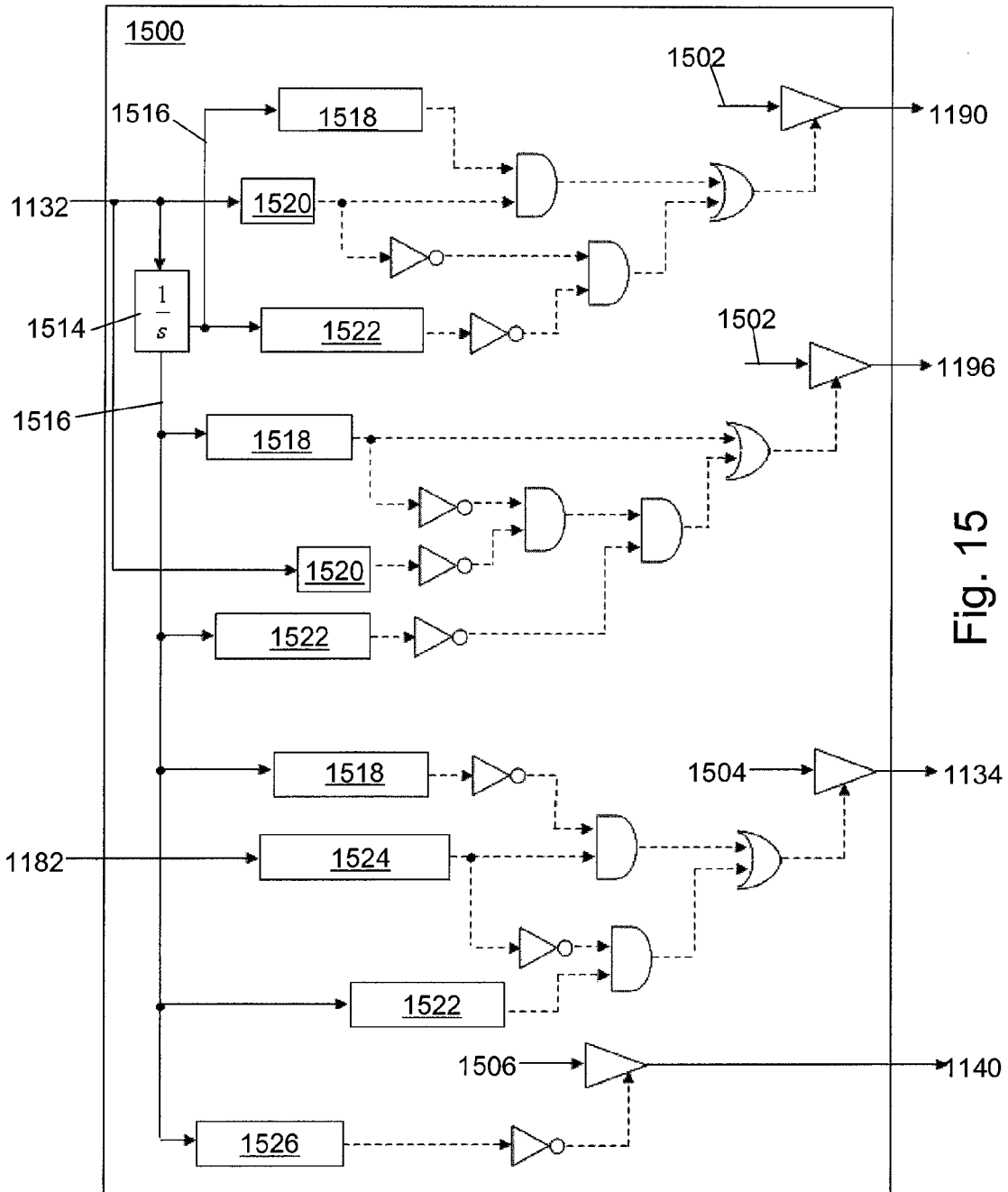


Fig. 15

1

CONTROL OF COMBINED STORAGE AND GENERATION IN DISTRIBUTED ENERGY RESOURCES

REFERENCE TO GOVERNMENT RIGHTS

This invention was made with United States government support awarded by the following agencies: National Science Foundation, Electrical & Communications System Div., Award No. 0078522. The United States government has certain rights in this invention.

FIELD

The field of the disclosure relates generally to power systems. More specifically, the disclosure relates to the control of storage and generation capabilities of a distributed energy resource included in a dynamic distribution system.

BACKGROUND

The demand for electrical power continues to grow worldwide. At the same time, aging transmission and distribution systems remain subject to occasional failures. Massive failures covering wide geographical areas and affecting millions of people have occurred, even in the United States, which has historically enjoyed a relatively reliable electrical power system. Problems with the capacity and reliability of the public power grid have driven the development of distributed energy resources (DER), small independent power generation systems which may be owned by, and located near, consumers of electrical power. DERs include a wide range of technologies, such as internal combustion engines, gas turbines, micro-turbines, photovoltaic cells, fuel cells, wind-power, storage systems, etc.

DERs can provide reliable power in critical applications as a backup to the primary electrical supply. For example, an interruption of power to a hospital can have life-threatening consequences. Similarly, when power to a factory is interrupted, productivity is lost, materials in process are wasted, and other costs are incurred in association with restarting the production line. Additionally, power from a DER can be provided to the main power grid to reduce energy price peaks by arbitraging energy price differentials. Geographically distributed sources of power, such as wind, solar, or hydroelectric power, may be too limited or intermittent to be used as the basis for a centralized power plant. However, these types of power sources can supplement or replace conventional power sources when the main power grid is available and can provide a backup when the main power grid is unavailable to increase energy efficiency and to reduce pollution and greenhouse gas emissions through the use of combined heat and power DER systems. DERs also can be used to meet load growth requirements and to enhance the robustness of the transmission system with a minimal addition of new lines.

Generally speaking, DERs can include two broad categories of electrical power sources: Direct current (DC) sources, such as fuel cells, solar cells, and batteries; and high-frequency analog current (AC) sources, such as micro-turbines and wind turbines. Both types of sources are typically used to provide an intermediate DC voltage, that may be produced directly by DC sources, and produced indirectly from AC sources, for example by rectification. In both types of sources, the intermediate DC voltage is subsequently converted to AC voltage or current at the required frequency, amplitude, and phase angle for use. In most cases, the conversion from the intermediate DC voltage to the usable AC voltage is per-

2

formed by a voltage inverter that can rapidly control the magnitude and phase of its output voltage.

DERs may be designed to operate in one of two modes: (1) "isolation" or "island" mode, wherein the DER is isolated from the main grid, and (2) normal "grid" mode, wherein the DER is connected to the main grid to either import power from or export power to the main grid. Smooth and efficient transition between the two modes is a necessity to effectively integrate DERs into the distribution system without harming the integrity of the remaining system. A centralized electrical power utility is in a position to monitor and coordinate the production and distribution of power from multiple generators. In contrast, DERs may include independent producers of power who have limited awareness or communication with each other. Even if the independent producers of power are able to communicate with each other, there may not be an effective way to ensure that they cooperate. As a result, to realize the potential of integrating DERs into the distribution system, the integration should not depend on complex, centralized command and control systems. Thus, for effective integration of DERs into the distribution system, a method and a system capable of responding to events in a distribution system using only local information is needed.

Effective integration of DERs into the distribution system also benefits from fast acting energy sources, such as storage, which provide the energy required by the loads until slower sources ramp-up their energy output when a DER isolates from the distribution system. Storage sources also allow the exploitation of energy price differentials by charging of the DER when power costs are low (i.e. at night) and discharging of the DER when power costs are high (i.e. during peak loads). Additionally, storage within an intermittent renewable such as a wind and/or a solar system can discharge when the renewable energy is low (no wind or sun) and charge when there is excess renewable energy (high wind at 2 a.m.). Both storage and generation can be clustered with each other to take advantage of the beneficial characteristics of both storage and generation. For example, storage being inverter based can have a faster response to load demands than a generator. The storage can respond in a few electrical cycles while a traditional generator may take tens of cycles. On the other hand, generator cost generally is much less than energy storage based on a dollars/megawatt-hour comparison. Thus, what is further needed is a method and a system capable of effective utilization of power generation and storage resources within a DER system.

SUMMARY

A method and a system for effective utilization of power generation and storage resources within a DER system are provided in an exemplary embodiment. Each active component of the distribution system reacts to local information such as a voltage, a current, and a frequency to change its operating point. A coordination controller controls the operation of storage and generation through minimum and maximum power limits. The coordination controller controls the rate of charge and discharge and the charge level of the storage device and the mode of operation for the power generation device and the energy storage device. For example, the coordination controller determines which device tracks load and which may operate at a fixed output.

In an exemplary embodiment, a coordination controller for controlling an energy storage device and a power generation device used in a distributed energy resource is provided. The controller determines a mode of operation for the energy storage device and the power generation device based on an

energy level of the energy storage device and on a load to which the energy storage device and the power generation device are operably coupled for power transfer. The controller determines a first minimum power set point and a first maximum power set point for the energy storage device based on the determined mode of operation and on a storage output power. The storage output power is measured at a first power bus operably coupled to the energy storage device. The controller determines a second minimum power set point and a second maximum power set point for the power generation device based on the determined mode of operation and on a generation output power. The generation output power is measured at a second power bus operably coupled to the power generation device. The controller controls a first output power of the energy storage device based on the determined first minimum power set point and the determined first maximum power set point. The controller also controls a second output power of the power generation device based on the determined second minimum power set point and the determined second maximum power set point.

In an exemplary embodiment, a microsource is provided. The microsource includes an energy storage device, a power generation device, and a controller. The energy storage device is operably coupled for power transfer to a load through a first power bus. The power generation device is operably coupled for power transfer to the load through a second power bus. The controller determines a mode of operation for the energy storage device and the power generation device based on an energy level of the energy storage device and on the load. The controller further determines minimum power set points and maximum power set points for the energy storage device and the power generation device based on the determined mode of operation, on a storage output power measured at the first power bus, and on a generation output power measured at the second power bus. The controller controls an output power of the energy storage device and an output power of the power generation device based on the determined minimum and maximum power set points.

In another exemplary embodiment, a method of controlling an energy storage device and a power generation device used in a distributed energy resource is provided. A mode of operation for the energy storage device and the power generation device is determined based on an energy level of the energy storage device and on a load to which the energy storage device and the power generation device are operably coupled for power transfer. A first minimum power set point and a first maximum power set point for the energy storage device are determined based on the determined mode of operation and on a storage output power. The storage output power is measured at a first power bus operably coupled to the energy storage device. A second minimum power set point and a second maximum power set point for the power generation device are determined based on the determined mode of operation and on a generation output power. The generation output power is measured at a second power bus operably coupled to the power generation device. A first output power of the energy storage device is controlled based on the determined first minimum power set point and the determined first maximum power set point. A second output power of the power generation device is controlled based on the determined second minimum power set point and the determined second maximum power set point.

Other principal features and advantages of the invention will become apparent to those skilled in the art upon review of the following drawings, the detailed description, and the appended claims.

BRIEF DESCRIPTION OF THE DRAWINGS

Exemplary embodiments of the invention will hereafter be described with reference to the accompanying drawings, wherein like numerals denote like elements.

FIG. 1 depicts a block diagram of a distributed energy resource (DER) system in accordance with an exemplary embodiment.

FIG. 2 is a diagram of a microgrid that includes a microsource implementing a unit power control scheme in accordance with an exemplary embodiment.

FIG. 3 is a diagram of a microgrid that includes a microsource implementing a zone power control scheme in accordance with an exemplary embodiment.

FIG. 4 is a graph depicting the relationship between steady state unit power vs. frequency ($P-\Omega$) for two exemplary microsources having different loads for use in a unit power control scheme in accordance with an exemplary embodiment.

FIG. 5 is a graph depicting the relationship between steady state zone power vs. frequency ($F-\Omega$) for two exemplary microsources having different loads for use in a zone power control scheme in accordance with an exemplary embodiment.

FIG. 6 is a diagram of two microsources used in a single zone in accordance with an exemplary embodiment.

FIG. 7 is a diagram of two microsources used in multiple zones in accordance with an exemplary embodiment.

FIG. 8a is a block diagram of a controller of a microsource used in a distributed energy resource that includes both a power generation system and an energy storage system in accordance with an exemplary embodiment.

FIG. 8b is a block diagram of an energy storage system of FIG. 8a in accordance with an exemplary embodiment.

FIG. 8c is a block diagram of a power generation system of FIG. 8a in accordance with an exemplary embodiment.

FIG. 9a is a block diagram of a voltage regulator of the energy storage system of FIG. 8b in accordance with an exemplary embodiment.

FIG. 9b is a block diagram of a voltage regulator of the power generation system of FIG. 8c in accordance with an exemplary embodiment.

FIG. 10 is a graph depicting a sliding window for applying power limits in accordance with an exemplary embodiment.

FIG. 11a is a block diagram of a $P-\Omega$ droop controller of the energy storage system of FIG. 8b in accordance with an exemplary embodiment.

FIG. 11b is a block diagram of a $P-\Omega$ droop governor of the power generation system of FIG. 8c in accordance with an exemplary embodiment.

FIG. 12 is a graph of an exemplary voltage droop regulation characteristic for a voltage regulator in accordance with an exemplary embodiment.

FIG. 13 is a graph of a load curve for a microsource including combined power generation and energy storage in accordance with an exemplary embodiment.

FIG. 14a-14d depict flow diagrams illustrating exemplary operations performed in combined control of both power generation and energy storage for a microsource in accordance with an exemplary embodiment.

FIG. 15 is a schematic diagram of a logic design circuit for the combined power generation and energy storage system of FIGS. 14a-14d in accordance with an exemplary embodiment.

DETAILED DESCRIPTION

With reference to FIG. 1, a distributed energy resource (DER) system 100 is shown in accordance with an exemplary

5

embodiment. Such an exemplary system is described, for example, in U.S. Pat. No. 7,116,010 and/or in U.S. Patent Publication No. 2006/000208574, the contents of which are incorporated by reference. Where the disclosure of the present application is limited by or in conflict with the disclosures of U.S. Pat. No. 7,116,010 and U.S. Patent Publication No. 2006/000208574, the disclosure of the present application controls. DER system **100** may include a utility supply **102** connected to a feeder line **104** that interconnects one or more microsource systems **106a**, **106b**, **106c**, and **106d** and one or more loads **108a**, **108b**, and **108c**. DER system **100** may include a plurality of feeder lines. Feeder line **104**, the one or more microsource systems **106a**, **106b**, **106c**, and **106d**, and the one or more loads **108a**, **108b**, and **108c** can form a microgrid **110**. Utility supply **102** can connect microgrid **110** to other similar microgrids distributed throughout DER system **100**. A microsource system can include exemplary microsource power sources, power storage, and power controllers. The power source can be, for example, a fuel cell, hydroelectric generator, photovoltaic array, windmill, micro-turbine, etc. The power storage, if present, can be, for example, a battery or flywheel.

Feeder line **104** may include one or more interface switches. An exemplary interface switch is described, for example, in U.S. patent application Ser. No. 11/266,976, filed Nov. 4, 2005 and entitled INTERFACE SWITCH FOR DISTRIBUTED ENERGY RESOURCES, the contents of which are incorporated by reference. Where the disclosure of the present application is limited by or in conflict with the disclosure of U.S. patent application Ser. No. 11/266,976, the disclosure of the present application controls. The interface switch, if used, can be positioned between feeder line **104** and utility supply **102** so that microgrid **110** can be isolated from utility supply **102**. When microgrid **110** is isolated from utility supply **102**, the microgrid **110** is said to be operating in “island mode”. When microgrid **110** is connected to the utility supply **110**, the microgrid **110** is said to be operating in “grid mode”. When DER system **100** is connected to the grid, the one or more loads **108a**, **108b**, and **108c** may receive power from both the grid and local sources, depending on the current situational demands.

When a microsource or microgrid operates in island mode, load tracking problems can arise because typical power sources used in microsourses, such as microturbines or fuel cells, tend to respond slowly, with time constants ranging from 10 to 200 seconds. Additionally, these types of power sources may be inertialess. Conventional utility power systems store energy in the inertia of the spinning mass of a generator. When a new load comes online, the initial energy balance can be met by the system’s inertia, which results in a slight reduction in system frequency. Because power sources in microsourses may be inertialess, a microsource may include power storage to ensure initial energy balance when loads are added during island mode.

Each microsource system **106a**, **106b**, **106c**, and **106d** preferably includes a microsource controller. The microsource controller responds to events using local information to respond to voltage drops, faults, blackouts, etc. and to switch to island operation mode as needed. The microsource controller controls the change in the output power of the system components as they change from a dispatched power mode to one in which frequency is controlled and load following is provided. Control schemes for a power controller in DER system **100** can be classified into one of three broad classes: unit power control, zone power control, and a mixed system using both unit power control and zone power control. Using a unit power controller, load changes

6

are matched by a corresponding power injection from the utility because a microsource holds its injection to a set point P_0 . During island mode, the microsource matches the power demand as loads change. Each microsource system **106a**, **106b**, **106c**, and **106d** regulates the voltage magnitude at its connection point and the injected power using either a variable slope method or a fixed slope method.

Using a zone power controller, power flow in zones is controlled instead of controlling the power flow from each microsource. Each microsource system **106a**, **106b**, **106c**, and **106d** regulates the voltage magnitude at its connection point and the power that is flowing in the feeder. Using a zone power controller, the microsource systems **106a**, **106b**, **106c**, and **106d** pick-up extra load demands, and as a result, show a constant load to the utility grid. In this case, DER system **100** becomes a true dispatchable load as seen from the utility side supporting demand-side management arrangements. To reduce confusion, the symbol, F , is used for power flow in a zone and the symbol, P , is used for the power output from a microsource. When connected to the grid, load changes are matched by a different power injection from the microsource because the controller holds the flow of power coming from the grid, F_{line} , to a constant value. During island mode, all of the microsourses participate in matching the power demand as loads change.

With reference to FIG. 2, a diagram of a microgrid **200** is shown in accordance with an exemplary embodiment using a unit power controller. Microgrid **200** may include a microsource **202** and a load **108**. Microsource **202** may be connected to feeder line **104** by an inductor **204**. An interface switch may be provided, for example, in feeder line **104**. The interface switch can be opened to isolate microgrid **200** from the rest of DER system **100** and can be closed to connect microgrid **200** to the rest of DER system **100**. Microsource **202** may include a controller capable of measuring a current through inductor **204** and of measuring a system voltage at a point **206** in feeder line **104** where inductor **204** joins feeder line **104**.

With reference to FIG. 3, a diagram of a microgrid **300** is shown in accordance with an exemplary embodiment using a zone power controller. Microgrid **300** may include a microsource **302** and load **108**. Microsource **302** may be connected to feeder line **104** by inductor **204**. An interface switch may be provided, for example, in feeder line **104**. The interface switch can be opened to isolate microgrid **300** from the rest of DER system **100** and can be closed to connect microgrid **300** to the rest of DER system **100**. Microsource **302** may include a controller capable of measuring a current at a point **304** in feeder line **104** between utility supply **102** and inductor **204** and of measuring a system voltage at a point **206** in feeder line **104** where inductor **204** joins feeder line **104**.

With reference to FIG. 4, a graph depicting the relationship between steady state unit power and frequency ($P-\omega$) using a fixed minimum slope method and unit power control is shown in accordance with an exemplary embodiment. FIG. 4 shows steady state characteristics. The response may deviate from the characteristic during a transition period. Two exemplary microsourses included in the microgrid are shown. The microsourses have different power set points though this is not required. A first microsource has a first power set point **402**. A second microsource has a second power set point **404**. First power set point **402** and second power set point **404** are the amount of power injected by each source when connected to the grid at a system frequency ω_s . A constant slope

7

$$m = -\frac{\Delta\omega}{P_{max}}$$

allows power to change between $P=0$ and $P=P_{max}$ as frequency changes over $\Delta\omega$. A lower bounding line **400** extends from $P=0$ to $P=P_{max}$ with a starting frequency of ω_o . An upper bounding line **401** extends from $P=0$ to $P=P_{max}$ with a starting frequency of $\omega_o+\Delta\omega$. Because a constant slope is used by the controller, the response lines are all parallel to and extend between lower bounding line **400** and upper bounding line **401**.

Movement along the lines of constant slope m in response to a transition to island mode depends on whether or not the microgrid is importing power from or exporting power to the grid. If the system was exporting to the grid before islanding, the resulting frequency of ω_{exp} **412** is greater than the system frequency ω_o . For example, if the system was exporting to the grid before islanding, the second microsource may move from the system frequency ω_o at second power set point **404** to a third power set point **410** operating at ω_{exp} **412**. The first microsource may shift from the system frequency ω_o at first power set point **402** to a fourth power set point **406** at $P=0$. When the $P=0$ limit is reached, the slope of the characteristic is switched to vertical, as shown by the arrows, to move the first microsource frequency upwards to a fifth power set point **408** operating at ω_{exp} **412**. The specific set points, of course, depend on the local demands and operating points of the microsourses. A $P=0$ limit may not be reached by either microsource.

If the system was importing from the grid before islanding, the resulting frequency of ω_{imp} **420** will be smaller than the system frequency ω_o . For example, if the system was importing to the grid before islanding, the first microsource may move from the system frequency ω_o at first power set point **402** to a sixth power set point **414** operating at ω_{imp} **420**. The second microsource may move from the system frequency ω_o at second power set point **404** to a seventh power set point **416** at $P=P_{max}$. When the $P=P_{max}$ limit is reached, the slope of the characteristic is switched to vertical, as shown by the arrows, to move the second microsource frequency downwards to an eighth power set point **418** operating at ω_{imp} **420**. The minimum and maximum power limits are enforced by switching the characteristic with constant slope to a vertical steady state characteristic when the minimum or maximum power limit is reached. The specific set points, of course, depend on the local demands and operating points of the microsourses. A $P=P_{max}$ limit may not be reached by either microsource.

With reference to FIG. 5, a graph depicting the relationship between steady state zone power and frequency ($F-\Omega$) using a fixed minimum slope method and zone power control is shown in accordance with an exemplary embodiment. Two exemplary microsourses are included in the microgrid. The microsourses have different power set points. A first microsource has a first flow set point **500**. A second microsource has a second flow set point **502**. The slope is fixed at the minimum slope m , but has a reversed sign because of the relation between the microsource output power, P , and the zone power flow, F , which can be derived by inspection of FIG. 3 as $F_{line}+P_{source}=\text{Load}$. F_{line} is the power (imported means positive) from the rest of DER system **100**, and P_{source} is the power injected or absorbed by microsource **302**. The power injected or absorbed by microsource **302** is assumed to be greater than the minimum power output, P_{min} , of microsource **302** and less than the maximum power output, P_{max} , of microsource **302**. For a microsource capable of

8

power injection only, P_{min} is positive or zero, while a bidirectional device capable of both power injection or power storage may have $P_{min}<0$. Load is the overall loading level seen by microsource **302**.

During connection with the grid, the flow in the zones tracks the requested values at the system frequency ω_o . When the microgrid transfers to island mode, the two microsourses readjust the flow depending on the arrangement of the microsourses with respect to each other and utility supply **102**. When regulating unit power, the relative location of loads and microsourses is irrelevant, but when regulating zone power flow, the relative location of loads and microsourses is important. For example, with reference to FIG. 6, a first microsource **604** and a second microsource **610** are arranged in series in a single zone. The use of a single zone is for illustrative purposes only. There can be a greater or a lesser number of microsourses in a single zone.

The zone includes a first load **606** and a second load **612** on a local power bus **614** connected by an interface switch **600** to utility supply **102**. During a transition to island mode, interface switch **600** opens. As a result, in a zone power control method for the circuit of FIG. 6, a first flow **602** nearest to the utility system is zero in island mode. A second flow **608** may increase to compensate for the first flow **602** transition to zero. Thus, with reference to FIG. 5, first flow **602** moves from the system frequency ω_o at first flow set point **500** to a third flow set point **510** operating at the frequency ω_{exp} **514**. Second flow **608** moves from the system frequency ω_o at second flow set point **502** to a fourth power set point **512**. As a result, in island mode, the system operates at frequency ω_{exp} **514** where first flow **602** is zero. Frequency ω_{exp} **514** is larger than the nominal system frequency ω_o because the system was exporting to the grid (first flow **602** < second flow **608**), which is the same behavior seen using unit power control.

With reference to FIG. 7, a first microsource **706** and a second microsource **710** are arranged in parallel in two zones. The use of two zones each with a single microsource is for illustrative purposes only. There can be a greater or a lesser number of microsourses in a greater or a lesser number of zones. A first load **708** is located on a first local power bus **714** connected by an interface switch **700** to utility supply **102**. A second load **712** is located on a second local power bus **716** connected by interface switch **700** to utility supply **102**. A first flow **702** flows through first local power bus **714**, and a second flow **704** flows through second local power bus **716**. The grid flow is the algebraic sum of first flow **702** and second flow **704**. During a transition to island mode, interface switch **700** opens.

In a zone power control method for the arrangement of FIG. 7, during island mode, the frequency takes the value where the sum of the flows is zero. As a result, as shown on FIG. 5, the frequency in island mode is frequency ω_{par} **508** where $F1=-F2$. With reference to FIG. 5, first flow **702** moves from the system frequency ω_o at first flow set point **500** to a fifth flow set point **504** operating at the frequency ω_{par} **508**. Second flow **704** moves from the system frequency ω_o at second flow set point **502** to a sixth power set point **506** at the frequency ω_{par} **508**.

With reference to FIG. 8a, a microsource **800** is shown in accordance with an exemplary embodiment. Microsource **800** may include an energy storage system **801**, a power generation system **803**, a coordination controller **805**, and an observer **807**. Coordination controller **805** controls the operation of energy storage system **801** and power generation system **803** and the mode of operation of each device. Observer **807** provides characteristic parameters of microsource **800** and of a DER system to which microsource **800** is connected

for use by energy storage system **801**, power generation system **803**, and coordination controller **805**. Microsource **800** and its various components may be implemented in or include hardware, firmware, software, and/or any combination of these methods. Thus, microsource **800** may include circuitry that can implement the processes indicated in the form of hardware, firmware, and/or a processor executing instructions embodied in software.

With reference to FIG. **8b**, microsource **800** connects to a grid through feeder lines **802**. Feeder lines **802** extend toward utility supply **102** in a first direction **804** and away from utility supply **102** in a second direction **806**. Microsource **800** connects to feeder lines **802** through bus lines **811** which connect with a first transformer **850**. A first sensor **813** measures a feeder current **808** through feeder lines **802** and sends the measured feeder current to observer **807**. A second sensor **810** measures a feeder bus voltage at the connection point of bus lines **811** with feeder lines **802** and sends the measured feeder bus voltage to observer **807**. A third sensor **815** measures an inverter current **809** through bus lines **811** between first transformer **850** and feeder lines **802** and sends the measured inverter current to observer **807**. Observer **807** captures local measurements **812** for input to energy storage system **801**, power generation system **803**, and coordination controller **805**.

With continuing reference to FIG. **8b**, energy storage system **801** is shown in accordance with an exemplary embodiment. Energy storage system **801** may include an inductor **842**, an inverter **852**, a first voltage regulator **854**, a P- ω droop controller **856**, and an energy storage device **858**. Observer **807** sends droop controller inputs **814** to P- ω droop controller **856**. Observer **807** sends first voltage regulator inputs **816** to first voltage regulator **854**. Observer **807** sends coordination controller inputs **818** to coordination controller **805**. Inverter **852** connects to feeder lines **802** through inductor **842** and first transformer **850**. Inverter **852** generates an output voltage at a phase angle of δ . In general, the magnitude of δ is small enough to satisfy the approximation $\sin(\delta) \sim \delta$. This implies that power is linear relative to δ . Inverter **852** generates an output voltage at a phase angle of δ . Energy storage device **858** connects with inverter **852** through a DC bus **840**.

First voltage regulator **854** assists in decoupling interactions between DER microsources and includes a voltage vs. reactive power droop controller so that, as the reactive power Q generated by inverter **852** becomes more capacitive, a local voltage set point **826** is reduced. Conversely, as Q becomes more inductive, local voltage set point **826** is increased.

Coordination controller **805** controls the rate of charge and discharge and the charge levels of energy storage device **858** by setting storage power output limits **834** input to P- ω droop controller **856** based on an energy level **836** received from energy storage device **858**. P- ω droop controller **856** provides the P- ω and/or F- ω functions described with reference to FIGS. **4** and **5**. Coordination controller **805** further receives storage set points **820** and an operational mode **822** as inputs to control the operation of energy storage system **801** and power generation system **803**.

With reference to FIG. **8c**, power generation system **803** is shown in accordance with an exemplary embodiment. Power generation system **803** may include a second voltage regulator **860**, a P- ω droop governor **862**, a prime mover **864**, and a generator **866**. Generator **866** connects to feeder lines **802** through a second transformer **851**. A fourth sensor **817** measures a generator current **819** through bus lines **811** between second transformer **851** and feeder lines **802** and sends the measured generator current to observer **807**. Generator **866** may be directly connected to the grid. As a result, second

transformer **851** need not be included in microsource **800**. For example, if the internal reactance is large enough to achieve the necessary isolation, second transformer **851** is not needed. Prime mover **864** attaches to a rotor shaft of generator **866** to drive generator **866**. Typically, the electrical output provided by generator **866** is responsive to the excitation of a field coil in generator **866**. Fuel is combusted in prime mover **864** to cause an output shaft to turn at a rotational speed or frequency ω_{shaft} which in turn drives the frequency of the output of generator **866**.

Second voltage regulator **860** assists in decoupling interactions between DER microsources and includes a voltage vs. reactive power droop controller so that, as the reactive power Q generated by generator **866** becomes more capacitive, a local voltage set point **868** is reduced. Conversely, as Q becomes more inductive, local voltage set point **868** is increased. P- ω droop governor **862** provides the P- ω and/or F- ω functions described with reference to FIGS. **4** and **5**. P- ω droop governor **862** additionally provides control over prime mover **864**. Prime mover **864** can be, for example, an engine, micro turbine, wind turbine, mechanical storage, etc.

Local measurements **812** to observer **807** may include feeder current **808**, the feeder bus voltage, inverter bus current **809**, generator bus current **819**, three phase reactive power Q injected onto utility supply **102** by generator **866** and energy storage device **858**, the injected three phase power P injected onto utility supply **102** by generator **866** and energy storage device **858**, the three phase grid power flow F, the angular velocity or frequency of the shaft ω_{shaft} of generator **866**, etc. Observer **807** uses electrical measurements of current, voltage, power, energy storage levels, and generator state to calculate data needed by energy storage system **801**, power generation system **803**, and coordination controller **805**. Observer **807** sends droop governor inputs **878** to P- ω droop governor **862**. Observer **807** sends second voltage regulator inputs **870** to second voltage regulator **860**. Coordination controller **805** controls the operation of power generation system **803** by setting generator power output limits **838** input to P- ω droop governor **862** based on a generator power received from observer **807**.

With reference to FIG. **9a**, a block diagram of first voltage regulator **854** is shown in accordance with an exemplary embodiment. First voltage regulator **854** may include a β block **900**, a first summer **902**, a second summer **904**, and a controller **906**. The local voltage set point **826** is input to first voltage regulator **854**. A regulated output voltage **824** is output from first voltage regulator **854** and input to inverter **852**. Creating an appropriate regulated output voltage at the terminals of inverter **852** regulates the feeder bus voltage. A plurality of inputs **816** from observer **807** include a storage reactive power Q **908** and feeder bus voltage **910**. Storage reactive power Q **908** is input to β block **900**, which calculates a modified reactive power **912**.

The modified reactive power **912** is subtracted from local voltage set point **826** in first summer **902** to define a desired local voltage set point **914** based on a droop constant β defined in β block **900**. In an exemplary embodiment, β block **900** is implemented to exhibit a voltage vs. reactive current droop as shown with reference to FIG. **12**. Droop constant β is the slope of the droop characteristic line **1220**. As reactive power Q becomes more inductive, the desired local voltage set point **914** becomes larger than the local voltage set point **826**. As reactive power Q becomes more capacitive, the desired local voltage set point **914** becomes smaller than the local voltage set point **826**. A feeder bus voltage **910** is compared to the desired local voltage set point **914** in second summer **904**. For example, feeder bus voltage **910** is sub-

tracted from the desired local voltage set point **914**. The resulting voltage error **916** is input to controller **906** to generate the regulated output voltage **824**. In an exemplary embodiment, controller **906** is a proportional-integral (PI) controller.

With reference to FIG. **9b**, a block diagram of second voltage regulator **860** is shown in accordance with an exemplary embodiment. Second voltage regulator **860** may include a second β block **920**, a third summer **922**, a fourth summer **924**, and a second controller **926**. The local voltage set point **868** is input to second voltage regulator **860**. Local voltage set point **868** of second voltage regulator **860** may or may not be the same as local voltage set point **826** of first voltage regulator **854**. A regulated output voltage **872** is output from second voltage regulator **860** and input to generator **866**. Creating an appropriate regulated output voltage at the terminals of generator **866** regulates the feeder bus voltage. A plurality of inputs **870** from observer **807** include a generator reactive power **Q 928** and feeder bus voltage **910**. Generator reactive power **Q 928** is input to second β block **920**, which calculates a modified reactive power **932**.

The modified reactive power **932** is subtracted from local voltage set point **868** in third summer **922** to define a desired local voltage set point **934** based on a droop constant β defined in β block **920** as discussed previously with reference to β block **900** of first voltage regulator **854**. Feeder bus voltage **910** is compared to the desired local voltage set point **934** in fourth summer **924**. For example, feeder bus voltage **910** is subtracted from the desired local voltage set point **934**. The resulting voltage error **936** is input to second controller **926** to generate the regulated output voltage **872**. In an exemplary embodiment, second controller **926** is a PI controller.

Energy storage device **858** normally operates in flow control mode with a $F-\omega$ characteristic as shown in FIG. **5**. In some situations, energy storage device **858** may operate in unit power control mode with a $P-\omega$ characteristic as shown in FIG. **4**. In either case, the limits of power from energy storage device **858** are input from coordination controller **805** to $P-\omega$ droop controller **856**. With reference to FIG. **10**, the range of output power, P , available from energy storage device **858** imposes a window **1007** on feeder flow, F , such that $P_{load} - P_{max} < F < P_{load} - P_{min}$, where P_{load} is the load on the system, and P_{max} and P_{min} are the limits on energy storage device **858**. When charging, P_{min} is negative. A system $F-\omega_o$ operating point **1000** is defined for the system frequency ω_o . The limits for the feeder flow, F , can be visualized on the $F-\omega$ plane as a window whose width **1006** is the difference between F_{min} **1002** and F_{max} **1004** which equals the difference between P_{max} and P_{min} . The location of the window on the F -axis depends on the value of P_{load} . As P_{load} increases, window **1007** slides to the right on the $F-\omega$ plane. Conversely, if the load is reduced, window **1007** slides to the left on the $F-\omega$ plane.

An example flow set point **1008** falls within window **1007**. Situations are possible that can result in the flow set point falling outside window **1007**. For example, load levels while connected to the grid, an incorrect choice for the flow set point, a change in output power of other microsources, and a transfer to island mode all can cause the flow set point to fall outside window **1007**. For example, a first flow set point **1010** falls to the left of window **1007**. In this situation, P_{max} is exceeded. As another example, a second flow set point **1012** falls to the right of window **1007**. In this situation, P_{min} is exceeded. To avoid a flow set point falling outside window **1007**, when the flow set point is outside window **1007**, the controls reset the flow set point to the closest edge of window **1007**.

Similarly, generator **866** can operate in flow control mode with an $F-\omega$ characteristic as shown in FIG. **5** or in unit power control mode with a $P-\omega$ characteristic as shown in FIG. **4**. In either case, the limits of power from generator **866** are input from coordination controller **805** to $P-\omega$ droop governor **862**. With reference to FIG. **10**, the range of output power, P , available from generator **866** imposes window **1007** on feeder flow, F , such that $P_{load} - P_{max} < F < P_{load} - P_{min}$, where P_{load} is the load on the system, and P_{max} and P_{min} are the power limits of generator **866**.

With reference to FIG. **11a**, $P-\omega$ droop controller **856** is shown in accordance with an exemplary embodiment. $P-\omega$ droop controller **856** may include a first mode switch **1100**, a first summer **1102**, a first PI controller **1104**, a second summer **1106**, a second PI controller **1108**, a third summer **1112**, a multiplier **1114**, a fourth summer **1116**, a fifth summer **1118**, and an integrator **1120**. A plurality of inputs **814** from observer **807** include a storage power **1132** and a measured power flow **1124**. With reference to FIGS. **8b** and **11a**, inputs of $P-\omega$ droop controller **856** also include storage power limits **834** from coordination controller **805**, a power set point **830**, and a frequency set point **832**. An inverter phase angle **828** is output from $P-\omega$ droop controller **856** to inverter **852**.

With reference to FIG. **11a**, $P-\omega$ droop controller **856** may be used to provide zone power control or unit power control. As a result, power set point **830** may be P_o or F_o . If unit power control is used, a power flow **1148** input to third summer **1112** is three phase power P **1132** output from observer **807** based on inverter current **809** and feeder bus voltage **910**. If zone power control is used, power flow **1148** is three phase grid power flow F **1124** output from observer **807** based on feeder current **808** and feeder bus voltage **910**. Mode switch **1100** determines which power parameter, three phase power P **1132** or three phase grid power flow F **1124**, is input to third summer **1112**. If unit power control is used, the sign of slope m in multiplier block **1114** is reversed. Three phase power P **1132** is input to first summer **1102** and second summer **1106**.

Power limits **834** include a $P_{s,max}$ set point **1134** of energy storage device **858** and a $P_{s,min}$ set point **1140** of energy storage device **858**. Changing the limits $P_{s,max}$ and $P_{s,min}$ controls the width of window **1007** shown with reference to FIG. **10**. Coordination controller **805** controls the charge state of energy storage device **858** through the limits $P_{s,max}$ and $P_{s,min}$. First summer **1102** compares $P_{s,max}$ set point **1134** with P_{meas} **1132** to calculate a first power difference **1136** input to first PI controller **1104**. For example, first summer **1102** subtracts P_{meas} **1132** from $P_{s,max}$ set point **1134**. First PI controller **1104** controls the maximum power through a maximum frequency change **1138**, $\Delta\omega_{max}$, that is limited between a minimum frequency and 0 Hz. In an exemplary embodiment, the minimum frequency is -1 Hz. Second summer **1106** compares $P_{s,min}$ set point **1140** with P_{meas} **1132** to calculate a second power difference **1142** input to second PI controller **1108**. For example, second summer **1106** subtracts P_{meas} **1132** from $P_{s,min}$ set point **1140**. Second PI controller **1108** controls the minimum power through a minimum frequency change **1144**, $\Delta\omega_{min}$, that is limited between 0 Hz and a maximum frequency. In an exemplary embodiment, the maximum frequency is 1 Hz. $\Delta\omega_{max}$ and $\Delta\omega_{min}$ are scaled as radians for input to fifth summer **1118**. Maximum frequency change **1138** and minimum frequency change **1144** maintain the flow set point within window **1007**. In general, control parameters of the first and second PI controllers **1104**, **1108** are set such that a steady state at a limit is reached in 10-20 cycles.

Third summer **1112** compares power set point **830** with power flow **1148** to calculate a third power difference **1150** input to multiplier **1114**. For example, third summer **1112**

subtracts power flow **1148** from power set point **830**. Multiplier **1114** multiplies third power difference **1150** by the slope m to determine a frequency change **1152**. Depending on the type of power control, frequency change **1152** may be defined as $m(F_o - F_{meas})$ or $-m(P_o - P_{meas})$. Fourth summer **1116** adds frequency set point **832** to frequency change **1152** to calculate an operating frequency **1154** input to fifth summer **1118**. Fifth summer **1118** adds operating frequency **1154** with maximum frequency change **1138** and minimum frequency change **1144** to calculate a requested frequency **1156** input to integrator **1120**. The output of the integrator **1120** is inverter phase angle **828**, which is rotating in time at frequency ω_{req} . Inverter phase angle **828** is reset to zero when it exceeds 2π radians. As known to those skilled in the art, energy storage system **801** can be implemented using a fewer or a greater number of elements than those depicted in FIGS. **8b**, **9a**, and **11a**. The elements shown are merely exemplary.

With reference to FIG. **11b**, P- ω droop governor **862** is shown in accordance with an exemplary embodiment. P- ω droop governor **862** may include a second mode switch block **1160**, a first summer **1162**, a third proportional PI controller **1164**, a second summer **1166**, a fourth PI controller **1168**, a fuel controller block **1170**, a third summer **1172**, a second multiplier **1174**, a fourth summer **1176**, a fifth summer **1178**, and a sixth summer **1180**. A plurality of inputs **878** from observer **807** include a generator power **1182** and measured power flow **1124**, and the angular velocity or revolutions per minute of the shaft, ω_{shaft} **1186** of generator **866**. With reference to FIGS. **8c** and **11b**, inputs of P- ω droop governor **862** also include power limits **838**, a power set point **876**, and a frequency set point **874**. A fuel command **880** is output from P- ω droop governor **862** to prime mover **864**.

With reference to FIG. **11b**, P- ω droop governor **862** may be used to provide zone power control or unit power control. As a result, power set point **876** may be P_o or F_o . If unit power control is used, power flow **1202** is three phase power P **1182** output from observer **807** based on generator bus current **819** and feeder bus voltage **910**. If zone power control is used, power flow **1202** is three phase grid power flow F **1124**. Second mode switch **1160** determines which power parameter, three phase power P **1182** or three phase grid power flow F **1124**, is input to third summer **1172** of P- ω droop governor **862**. If unit power control is used, the sign of slope m in second multiplier block **1174** is reversed.

Three phase power P **1182** is input to first summer **1162** and second summer **1166** of P- ω droop governor **862**. Power limits **838** include a $P_{g_{max}}$ set point **1190** of generator **866** and a $P_{g_{min}}$ set point **1196** of generator **866**. Changing the limits $P_{g_{max}}$ and $P_{g_{min}}$ controls the width of window **1007** shown with reference to FIG. **10**. First summer **1162** of P- ω droop governor **862** compares $P_{g_{max}}$ set point **1190** with three phase power P **1182** to calculate a first power difference **1192** input to third PI controller **1164**. For example, first summer **1162** of P- ω droop governor **862** subtracts three phase power P **1182** from $P_{g_{max}}$ set point **1190** so that first power difference **1192** is negative if the $P_{g_{max}}$ set point **1190** is exceeded. Third PI controller **1164** controls the maximum power through a maximum frequency change **1194**, $\Delta\omega_{max}$, that is limited between a minimum frequency and 0 Hz. In an exemplary embodiment, the minimum frequency is -1 Hz. Second summer **1166** of P- ω droop governor **862** compares $P_{g_{min}}$ set point **1196** with three phase power P **1182** to calculate a second power difference **1198** input to fourth PI controller **1168**. For example, second summer **1166** of P- ω droop governor **862** subtracts three phase power P **1182** from $P_{g_{min}}$ set point **1196** so that first power difference **1198** is positive if the $P_{g_{min}}$ set point **1196** is exceeded. Fourth PI controller **1168** controls the

minimum power through a minimum frequency change **1200**, $\Delta\omega_{min}$, that is limited between 0 Hz and a maximum frequency. In an exemplary embodiment, the maximum frequency is 1 Hz. $\Delta\omega_{max}$ and $\Delta\omega_{min}$ are scaled as radians for input to fifth summer **1178** of P- ω droop governor **862**. In general, control parameters of the third and fourth PI controllers **1164**, **1168** are set such that a steady state at a limit is reached in 10 - 20 cycles. Maximum frequency change **1194** and minimum frequency change **1200** maintain the flow set point within window **1007**.

Third summer **1112** of P- ω droop governor **862** compares power set point **876** with power flow **1202** to calculate a third power difference **1204** input to second multiplier **1174**. For example, third summer **1112** of P- ω droop governor **862** subtracts power flow **1202** from power set point **876**. Power set point **876** of P- ω droop governor **862** may be the same or different from power set point **830** of P- ω droop controller **856**. Second multiplier **1174** multiplies third power difference **1204** by the slope m to determine a frequency change **1206**. Depending on the type of power control, frequency change **1206** may be defined as $m(F_o - F)$ or $-m(P_o - P)$.

Fourth summer **1176** of P- ω droop governor **862** adds frequency set point **874** to frequency change **1206** to calculate a total frequency **1208** input to fifth summer **1178** of P- ω droop governor **862**. Frequency set point **874** of P- ω droop governor **862** may be the same or different from frequency set point **832** of P- ω droop controller **856**. Fifth summer **1178** of P- ω droop governor **862** adds total frequency **1208** with maximum frequency change **1194** and minimum frequency change **1200** to calculate a requested shaft speed **1210** input to sixth summer **1180** of P- ω droop governor **862**. Sixth summer **1180** of P- ω droop governor **862** compares ω_{shaft} **1186** with requested shaft speed **1210** to calculate a shaft rotation error **1212** input to fuel controller **1170**. For example, sixth summer **1180** of P- ω droop governor **862** subtracts ω_{shaft} **1186** from requested shaft speed **1210** to determine shaft rotation error **1212**. The output of fuel controller **1170** is fuel command **880** calculated based on shaft rotation error **1212** and input to prime mover **864**. In an exemplary embodiment, fuel controller **1170** is a PI controller. As known to those skilled in the art, power generation system **803** can be implemented using a fewer or a greater number of elements than those depicted in FIGS. **8c**, **9b**, and **11b**. The elements shown are merely exemplary.

Microsource **800**, which includes a combined generation and storage capability, may have six basic modes of operation denoted here as A, B, C, D, E, F. Modes A and B are normally used for "peak shaving" during the high load periods of the day. In "peak shaving", the utility provides a preset amount of load and microsource **800** provides for any excess load requirements. In contrast, in "base loading", microsource **800** provides a preset amount of load and the utility provides for any excess load requirements. In mode A, generator **866** tracks the load and energy storage device **858** may be set to a fixed output, P_s , which is equal to or less than $P_{s_{dis}}$, which is the preferred discharge rate of energy storage device **858**. The maximum sustained generator output is $P_{g_{PM}}$.

Mode B is the mirror image of mode A with energy storage device **858** tracking the load and generator **866** providing a constant output power, P_g . In the case of storage, $P_{s_{max}}$ may be set at the maximum rating of inverter **852**. In general, generator **866** is operated at the most efficient operating point. In both modes A and B, it is assumed that energy storage device **858** has the energy necessary to operate as required in the modes.

Mode C is the expected mode used during low loads, (i.e. early morning) where the utility is providing more power than

the loads needs. In this case, generator **866** is off and energy storage device **858** takes up any difference with its minimum limit set to the desired charging rate, $-Ps_{chg}$. The maximum limit is set to the maximum possible discharge rate, Ps_{pk} to allow energy storage device **858** to handle a sudden load increase or loss of the utility while generator **866** comes up to help to meet the load.

Mode D is used when the feeder transfers to island operation. Limits on both generator **866** and energy storage device **858** may be relaxed to facilitate the transition. Mode E is used when the energy level of energy storage device **858** falls below a minimum reserve value, Es_{min_res} . Es_{min_res} is the minimum reserve value of energy that energy storage device **858** should have to be able to provide short-term energy to loads during islanding. Mode E is activated to hold the energy level above Es_{min_res} . Generator **866** is set at it's maximum power to supply loads and to charge energy storage device **858**. Mode F is used when the energy level of energy storage device **858** reaches a maximum reserve value, Es_{max_res} . Es_{max_res} is the maximum reserve value of energy that energy storage device **858** should not exceed except during a brief time in island operation (Mode D). Mode F is activated to reduce the storage level of energy storage device **858** to an acceptable level.

Depending on the value of the energy in energy storage device **858**, on the power allocation choice, and on the loading level of microsource **800**, coordination controller **805** controls energy storage system **801** and power generation system **803** to operate in one of the six possible modes as summarized below:

Mode	Function	$P_{g_{min}}$	$P_{g_{max}}$	Ps_{min}	Ps_{max}
A	Generator tracking load	0	$P_{g_{PM}}$	Fixed $Ps \leq Ps_{dis}$	
B	Storage tracking load	Fixed $Pg \geq 0$		≥ 0	Ps_{pk}
C	Charging storage from utility	Fixed $Pg = 0$		$-Ps_{chg}$	Ps_{pk}
D	Island operation	0	$P_{g_{PM}}$	$-Ps_{pk}$	Ps_{pk}
E	Storage low on energy	Fixed $Pg = P_{g_{PM}}$		$-Ps_{pk}$	Ps_{pk}
F	Storage full	Fixed $Pg = 0$		0	Ps_{pk}

Each mode has specific triggers and rules to move to another mode. As an example, a load profile is shown with reference to FIG. 13 in accordance with an exemplary embodiment in which "peak shaving" is provided by microsource **800**. FIG. 13 shows a load curve **1300**, for example, covering a 24-hour period. The power provided by the utility is defined by the F_o set point. For loads less than F_o , energy storage device **858** is charging (mode C). For loads greater than F_o , energy storage device **858** and generator **866** are providing power to hold the power from the utility to F_o . Three different load regions can be defined for which microsource **800** operates in different modes.

In a first region **1310**, the load request is lower than the amount of power F_o imported from the grid. For example, this condition is illustrated in the time interval between a first time **1301** and a second time **1302**. In first region **1310**, the power in excess of power F_o is used to charge energy storage device **858** allowing the flow of power from the utility to remain constant at F_o . The output power of generator **866** is zero and the minimum power limit for the storage is $-Ps_{chg}$. Thus, the time interval between first time **1301** and second time **1302**

results in operation in Mode C, in which, energy storage device **858** is charged from the utility, i.e., $P_{g_{max}}=P_{g_{min}}=0$; $Ps_{max}=0$; and $Ps_{min}=-Ps_{chg}$.

In a second region **1312**, the load request is higher than the amount of power F_o imported from the grid with the excess power required to meet the load request less than the maximum output of the generator. For example, this condition is illustrated in the time interval between second time **1302** and a third time **1304** and also between a fourth time **1306** and a fifth time **1308**. In second region **1312**, the load demand is higher than the power imported from the utility and the shortage of power is provided by generator **866** to allow the power from the utility to remain constant at F_o . The output power from energy storage device **858** is zero. Thus, the time intervals between second time **1302** and third time **1304** and between fourth time **1306** and fifth time **1308** results in operation in Mode A, in which, generator **866** tracks the load and energy storage device **858** provides a fixed output power. Thus, $P_{g_{min}}=0$; $P_{g_{max}}=P_{g_{PM}}$; and $Ps_{max}=Ps_{min}=0$.

In a third region **1314**, the load request is higher than the amount of power F_o imported from the grid with the excess power required to meet the load request greater than the maximum output of the generator, $P_{g_{PM}}$. For example, this condition is illustrated in the time interval between third time **1304** and fourth time **1306**. In third region **1314**, the load demand is larger than the sum of the flow of power coming from the grid F_o and the nominal maximum power limit for generator **866** $P_{g_{PM}}$. Energy storage device **858** provides the excess power required to satisfy the load demands while maintaining the power coming from the grid to F_o . Thus, energy storage device **858** performs the load tracking function. Thus, the time interval between third time **1304** and fourth time **1306** results in operation in Mode B such that $P_{g_{min}}=P_{g_{max}}=P_{g_{PM}}$; $Ps_{max}=Ps_{pk}$; and $Ps_{min}=0$. Additional load profiles may be used to track load using the combined generation/storage system of microsource **800** based on different operating rules.

With reference to FIG. 14a, exemplary operations performed by coordination controller **805** in determining a setting of $P_{g_{max}}$ are shown based on Modes A-F. In an operation **1400**, a determination is made concerning whether or not energy storage device **858** is charging. If energy storage device **858** is charging, processing continues at an operation **1402**. If energy storage device **858** is not charging, processing continues at an operation **1408**. In operation **1402**, a determination is made concerning whether or not an energy level of energy storage device **858** is less than Es_{min_res} . If the energy level of energy storage device **858** is less than Es_{min_res} , processing continues at an operation **1404**. If the energy level of energy storage device **858** is not less than Es_{min_res} , processing continues at an operation **1406**. In operation **1404**, generator **866** is used to charge energy storage device **858** with $P_{g_{max}}=P_{g_{PM}}$. In operation **1406**, generator **866** is switched off and the grid charges energy storage device **858** with $P_{g_{max}}=0$.

In operation **1408**, a determination is made concerning whether or not an energy level of energy storage device **858** is greater than Es_{max_res} . If the energy level of energy storage device **858** is greater than Es_{max_res} , processing continues at an operation **1410**. If the energy level of energy storage device **858** is not greater than Es_{max_res} , processing continues at an operation **1412**. In operation **1410**, generator **866** is switched off and the grid discharges energy storage device **858** with $P_{g_{max}}=0$. In operation **1412**, generator **866** can be operated at maximum power with $P_{g_{max}}=P_{g_{PM}}$ and energy storage device **858** may be operated to provide "peak shaving".

With reference to FIG. 14b, exemplary operations performed by coordination controller 805 in determining a setting of $P_{g_{min}}$ are shown. In operation 1420, a determination is made concerning whether or not an energy level of energy storage device 858 is less than Es_{min_res} . If the energy level of energy storage device 858 is less than Es_{min_res} , processing continues at an operation 1422. If the energy level of energy storage device 858 is not less than Es_{min_res} , processing continues at an operation 1424. In operation 1422, generator 866 is used to charge energy storage device 858 with $P_{g_{min}}=P_{g_{PM}}$. In operation 1424, a determination is made concerning whether or not energy storage device 858 is charging. If energy storage device 858 is charging, processing continues at an operation 1426. If energy storage device 858 is not charging, processing continues at an operation 1428. In operation 1426, generator 866 is switched off and the grid charges energy storage device 858 with $P_{g_{min}}=0$.

In operation 1428, a determination is made concerning whether or not an energy level of energy storage device 858 is greater than Es_{max_res} . If the energy level of energy storage device 858 is greater than Es_{max_res} , processing continues at an operation 1430. If the energy level of energy storage device 858 is not greater than Es_{max_res} , processing continues at an operation 1432. In operation 1430, generator 866 is switched off and the grid discharges energy storage device 858 with $P_{g_{min}}=0$. In operation 1432, generator 866 can be operated at maximum power with $P_{g_{min}}=P_{g_{PM}}$ and energy storage device 858 may be operated to provide "peak shaving".

With reference to FIG. 14c, exemplary operations performed by coordination controller 805 in determining a setting of Ps_{max} are shown. In operation 1440, a determination is made concerning whether or not generator 866 is providing a maximum power, $P_{g_{PM}}$. If generator 866 is providing a maximum power $P_{g_{PM}}$, processing continues at an operation 1442. If generator 866 is not providing a maximum power, $P_{g_{PM}}$, processing continues at an operation 1448. In operation 1442, a determination is made concerning whether or not an energy level of energy storage device 858 is less than Es_{min_res} . If the energy level of energy storage device 858 is less than Es_{min_res} , processing continues at an operation 1446. If the energy level of energy storage device 858 is not less than Es_{min_res} , processing continues at an operation 1444. In operation 1444, energy storage device 858 is allowed to inject maximum power with $Ps_{max}=Ps_{pk}$ to support "peak shaving". In operation 1446, energy storage device 858 is not allowed to inject power and $Ps_{max}=0$.

In operation 1448, a determination is made concerning whether or not an energy level of energy storage device 858 is greater than Es_{max_res} . If the energy level of energy storage device 858 is greater than Es_{max_res} , processing continues at an operation 1452. If the energy level of energy storage device 858 is not greater than Es_{max_res} , processing continues at an operation 1450. In operation 1450, generator 866 is controlled to provide "base loading" and energy storage device 858 is not allowed to inject power and $Ps_{max}=0$. In operation 1452, energy storage device 858 injects power with $Ps_{max}=Ps_{min}=fixed$ $Ps \leq Ps_{dis}$ such that generator 866 and energy storage device 858 share the load requirements.

With reference to FIG. 14d, exemplary operations performed by coordination controller 805 in determining a setting of Ps_{min} are shown. In operation 1460, a determination is made concerning whether or not an energy level of energy storage device 858 is greater than Es_{max_res} . If the energy level of energy storage device 858 is greater than Es_{max_res} , processing continues at an operation 1464. If the energy level of energy storage device 858 is not greater

than Es_{max_res} , processing continues at an operation 1462. In operation 1462, energy storage device 858 is allowed to charge with $Ps_{min}=-Ps_{chg}$. In operation 1464, energy storage device 858 is prevented from charging such that $Ps_{min}=0$.

With reference to FIG. 15, a logic design 1500 for coordination controller 805 is shown in accordance with an exemplary embodiment. Logic design 1500 includes Ps 1132, $P_{g_{max}}$ 1502, Pg 1182, Ps_{pk} 1504, and $-Ps_{pk}$ 1506 as inputs and $P_{g_{max}}$ 1190, $P_{g_{min}}$ 1196, Ps_{max} 1134, Ps_{min} 1140 as outputs. Ps 1132 is provided as an input to integrator 1514 to form an integrated Ps 1516. Ps 1132 is input to a first block 1520 which determines if $Ps < 0$. Pg 1504 is input to a second block 1524 which determines if $Pg = P_{g_{max}}$. Integrated Ps 1516 or Es is input to a third block 1518 which determines if $Es < Es_{min_res}$. Es is also input to a fourth block 1522 which determines if $Es > Es_{max_res}$. Es is input to a fifth block 1526 which determines if $Es = Es_{max_res}$. Logic design 1500 is further comprised of inverters, non-inverting amplifiers, AND gates, and OR gates which provided the functionality discussed with reference to FIGS. 14a-14d in setting $P_{g_{max}}$ 1190, $P_{g_{min}}$ 1196, Ps_{max} 1134, Ps_{min} 1140.

The foregoing description of exemplary embodiments of the invention have been presented for purposes of illustration and of description. It is not intended to be exhaustive or to limit the invention to the precise form disclosed, and modifications and variations are possible in light of the above teachings or may be acquired from practice of the invention. The embodiments were chosen and described in order to explain the principles of the invention and as practical applications of the invention to enable one skilled in the art to utilize the invention in various embodiments and with various modifications as suited to the particular use contemplated. It is intended that the scope of the invention be defined by the claims appended hereto and their equivalents.

What is claimed is:

1. A controller for controlling an energy storage device and a power generation device used in a distributed energy resource, the controller comprising circuitry:
 - to determine a mode of operation for an energy storage device and a power generation device based on an energy level of the energy storage device and on a load to which the energy storage device and the power generation device are operably coupled for power transfer;
 - to determine a first minimum power set point and a first maximum power set point for the energy storage device based on the determined mode of operation and on a storage output power, wherein the storage output power is measured at a first power bus operably coupled to the energy storage device;
 - to determine a second minimum power set point and a second maximum power set point for the power generation device based on the determined mode of operation and on a generation output power, wherein the generation output power is measured at a second power bus operably coupled to the power generation device;
 - to control a first output power of the energy storage device based on the determined first minimum power set point and the determined first maximum power set point; and
 - to control a second output power of the power generation device based on the determined second minimum power set point and the determined second maximum power set point.
2. The controller of claim 1, wherein controlling the first output power of the energy storage device comprises:
 - calculating a maximum frequency change for an inverter coupled with the energy storage device based on a first

comparison between the determined first maximum power set point and the storage output power;
 calculating a minimum frequency change for the inverter based on a second comparison between the determined first minimum power set point and the storage output power;
 calculating an operating frequency for the inverter based on a third comparison between a power set point and a measured power flow;
 calculating a requested frequency for the inverter by combining the calculated maximum frequency change, the calculated minimum frequency change, and the calculated operating frequency; and
 integrating the calculated requested frequency to determine a phase angle of a voltage of the inverter to control the first output power.

3. The controller of claim 2, wherein the measured power flow is the storage output power.

4. The controller of claim 2, further comprising regulating an output voltage of the inverter using a voltage versus reactive power droop controller.

5. The controller of claim 1, wherein controlling the second output power of the power generation comprises:

calculating a maximum frequency change for the power generation device based on the determined second maximum power set point and the generation output power;
 calculating a minimum frequency change for the power generation device based on the determined second minimum power set point and the generation output power;
 calculating an operating frequency for the power generation device based on a third comparison between a power set point and a measured power flow;
 calculating a requested shaft speed for the power generation device by combining the calculated maximum frequency change, the calculated minimum frequency change, and the calculated operating frequency;
 calculating a shaft speed adjustment for the power generation device based on a fourth comparison between the calculated requested shaft speed and a measured shaft speed of the power generation device;
 calculating a fuel command for the power generation device based on the calculated shaft speed adjustment; and

adjusting a rotation rate of a shaft of the power generation device based on the calculated fuel command to control the second output power.

6. The controller of claim 5, wherein the measured power flow is the generation output power.

7. The controller of claim 5, further comprising regulating an output voltage of the power generation device using a voltage versus reactive power droop controller.

8. The controller of claim 1, wherein in a first mode of operation, the determined first minimum power set point is a constant power level, the determined first maximum power set point is the constant power level, the determined second minimum power set point is approximately zero, and the second maximum power set point is determined to provide an excess power level required by the load.

9. The controller of claim 8, wherein the constant power level is a preferred discharge rate of the energy storage device.

10. The controller of claim 1, wherein in a first mode of operation, the determined second minimum power set point is a constant power level, the determined second maximum power set point is the constant power level, the determined first maximum power set point is a maximum discharge rate

of the energy storage device, and the first minimum power set point is determined to provide an excess power level required by the load.

11. The controller of claim 1, wherein in a first mode of operation, the determined first minimum power set point is a charge rate of the energy storage device and the determined first maximum power set point is a maximum discharge rate of the energy storage device.

12. The controller of claim 11, wherein the determined second minimum power set point is approximately zero, the determined second maximum power set point is approximately zero, and further wherein the power transfer charges the energy storage device.

13. The controller of claim 1, wherein in a first mode of operation, the determined first minimum power set point is a maximum charge rate of the energy storage device, the determined first maximum power set point is a maximum discharge rate of the energy storage device, the determined second minimum power set point is approximately zero, and the determined second maximum power set point is a maximum sustained power output of the power generation device.

14. The controller of claim 13, wherein the power transfer is zero.

15. The controller of claim 1, wherein the energy level of the energy storage device is below a minimum reserve value, and further wherein the determined second minimum power set point is a maximum sustained power output of the power generation device, the determined second maximum power set point is the maximum sustained power output of the power generation device, and the second output power of the power generation device charges the energy storage device.

16. The controller of claim 15, wherein the determined first minimum power set point is a maximum charge rate of the energy storage device, and the determined first maximum power set point is a maximum discharge rate of the energy storage device.

17. The controller of claim 1, wherein the energy level of the energy storage device is above a maximum reserve value, and further wherein the determined second minimum power set point is approximately zero, the determined second maximum power set point is approximately zero, the determined first minimum power set point is approximately zero, and the determined first maximum power set point is a maximum discharge rate of the energy storage device.

18. A method of controlling an energy storage device and a power generation device used in a distributed energy resource, the method comprising:

determining a mode of operation for an energy storage device and a power generation device based on an energy level of the energy storage device and on a load to which the energy storage device and the power generation device are operably coupled for power transfer;

determining a first minimum power set point and a first maximum power set point for the energy storage device based on the determined mode of operation and on a storage output power, wherein the storage output power is measured at a first power bus operably coupled to the energy storage device;

determining a second minimum power set point and a second maximum power set point for the power generation device based on the determined mode of operation and on a generation output power, wherein the generation output power is measured at a second power bus operably coupled to the power generation device;

controlling a first output power of the energy storage device based on the determined first minimum power set point and the determined first maximum power set point; and

21

controlling a second output power of the power generation device based on the determined second minimum power set point and the determined second maximum power set point.

19. A microsource, the microsource comprising: 5
an energy storage device operably coupled for power transfer to a load through a first power bus;
a power generation device operably coupled for power transfer to the load through a second power bus; and
a controller operably coupled with the energy storage 10 device and the power generation device, the controller including circuitry
to determine a mode of operation for the energy storage device and the power generation device based on an energy level of the energy storage device and on the 15 load;
to determine a first minimum power set point and a first maximum power set point for the energy storage

22

device based on the determined mode of operation and on a storage output power measured at the first power bus;
to determine a second minimum power set point and a second maximum power set point for the power generation device based on the determined mode of operation and on a generation output power measured at the second power bus;
to control a first output power of the energy storage device based on the determined first minimum power set point and the determined first maximum power set point; and
to control a second output power of the power generation device based on the determined second minimum power set point and the determined second maximum power set point.

* * * * *